



MEMORANDUM

To: Board of Directors
From: Gary W. Fern, P.E., Executive Director
Date: April 10, 2009
Re: Consent Agenda - Monthly Financial Reports
cc: James M. Bowling, IV

The following is a summary of the monthly financial reports for March, 2009:

Revenue and Expense Summary

Total Revenues to date \$16,721,185 are below the projected year-to-date, and Total Expenses \$15,073,791 are less than the Total Revenues and projected year-to-date expenses.

Repair, Replacement and Rehabilitation (3R) Fund

The available fund balance after appropriations for cost overruns and unappropriated projects is \$1,763,728. Equipment Replacement Expenses for the year total \$117,937.07.

Five Column Balance Sheet

The total liabilities to date of \$1,479,470.00 compared to total assets of \$106,329,387.29, results in total net assets of \$104,849,917.29.

Income Statements

The net income for the month is \$548,762.28.

Investment Summary

With total investments of \$10,414,045.15, we have projected interest receivable for the month of March, 2009 of \$32,512.13. The average yield is 3.99%.

ACSA Monthly Water Consumption Graph

Attached for your review this month is a water consumption graph for FY2009. The total water used in March 2009 was approximately 111,514,075 gallons. This is a decrease of approximately 2,927,926 gallons (2.6%) from February 2009 and a decrease of approximately 1,485,925 gallons (1.3%) from March 2008.

We expect to see an increase in water use in the month of April, 2009.

Water Units by Class/Water Usage by Class

The number of invoiced water connections by class increased by 15 since the month of February, 2009. The average water use for industrial increased, while all other classes decreased from the previous month. The average single-family residential water use is calculated at 3,535 gallons for the month. The average single-family residential water use is approximately 114 gpd.

Single-Family Residential Water Usage Graph

Single-family residential water usage decreased from February, 2009 to March, 2009 by approximately 1,686,426 gallons. The difference in water use between that consumed in March, 2008 and March, 2009 is a decrease of 1,675,325 gallons. The percentage difference per tier between March, 2008 and March, 2009 is as follows:

Tier	March 2009 (gals.)	March 2008 (gals.)	Difference (gals.)	Percent Difference	Revenue Difference at current rates
One	35,609,025	35,486,050	122,975	0.3%	\$474.68
Two	13,054,200	14,010,100	(955,900)	0.0%	0.00
Three	3,830,000	4,672,400	(842,400)	0.0%	0.00
Total	52,493,225	54,168,550	(1,675,325)	N/A	\$474.68

RWSA Flows vs. ACSA Billings Graphs

Three (3) graphs are provided which compare the RWSA Billed Water Flows to the ACSA Billed Water Flows in the three systems: Urban Area, Crozet and Scottsville. The resulting difference, as a percentage, is 21%, 9% and 49%, respectively.

Board Action

No Board action is required.

GWF/dbh

	Budget	Month	Current Month's % to Budget	Actual Year-to-Date	Year-to-Date % to Budget	Projected Year-to-Date 75.00% of Budget
REVENUES						
<i>Water & Sewer Volume and Service Charges</i>						
Urban		\$1,322,604		\$13,082,868		
Crozet		\$26,817		\$1,111,406		
Scottsville		\$18,876		\$193,107		
Total	\$21,061,018	\$1,368,297	6.50%	\$14,387,381	68.31%	\$15,795,764
<i>Water Connection Charges</i>						
Urban		\$1,613		\$72,503		
Crozet		\$2,414		\$8,059		
Scottsville		\$0		\$3,533		
Total	\$89,800	\$4,027	4.48%	\$84,095	93.65%	\$67,350
<i>Sewer Connection Charges</i>						
Urban		\$0		\$14,380		
Crozet		\$7,275		\$29,050		
Scottsville		\$1,900		\$5,590		
Total	\$39,600	\$9,175	23.17%	\$49,020	123.79%	\$29,700
<i>Customer Contributions</i>						
Water	\$1,014,645	\$111,186		\$791,482		
Sewer	\$1,208,225	\$134,439		\$861,526		
Total	\$2,222,870	\$245,625	11.05%	\$1,653,008	74.36%	\$1,667,153
<i>Buck Mountain Surcharge</i>	\$104,600	\$2,800	2.68%	\$43,200	41.30%	\$78,450
<i>Interest</i>	\$450,000	\$3,411	0.76%	\$88,410	19.65%	\$337,500
<i>Miscellaneous</i>	\$485,150	\$135,870	28.01%	\$362,380	74.69%	\$363,863
<i>Transfer for Prior Year Appropriations</i>	\$53,692	\$0	0.00%	\$53,692	100.00%	\$40,269
<i>Transfer for Capital Expenses</i>	\$2,469,000		0.00%		0.00%	\$1,851,750
TOTAL REVENUE	\$26,975,730	\$1,769,204	6.56%	\$16,721,185	61.99%	\$20,231,798
EXPENSES						
<i>RWSA - Purchase of Water</i>	\$6,123,902	\$410,672	6.71%	\$3,851,880	62.90%	\$4,592,927
<i>RWSA - Sewer Treatment</i>	\$5,480,564	\$329,032	6.00%	\$3,047,172	55.60%	\$4,110,423
<i>Buck Mountain Surcharge Expense</i>	\$104,600	\$27,500	26.29%	\$40,400	38.62%	\$78,450
<i>Administration</i>	\$1,495,233	\$102,355	6.85%	\$988,586	66.12%	\$1,121,424
<i>Finance</i>	\$1,260,950	\$93,073	7.38%	\$904,704	71.75%	\$945,713
<i>Engineering</i>	\$1,253,423	\$92,693	7.40%	\$871,467	69.53%	\$940,067
<i>Maintenance</i>	\$2,271,449	\$63,155	2.78%	\$1,390,315	61.21%	\$1,703,587
<i>800 Code Equipment Expenses</i>	\$475,100	\$133,121	28.02%	\$228,076	48.01%	\$356,325
<i>Operating Reserve</i>	\$568,565	\$0	0.00%	\$0	0.00%	\$426,424
<i>Repair/Replacement Reserves</i>	\$641,585	\$0	0.00%	\$0	0.00%	\$481,189
<i>Debt Service</i>	\$372,700	\$0	0.00%	\$12,591	3.38%	\$279,525
<i>Capital Expenses</i>	\$6,927,660	\$376,886	5.44%	\$3,738,601	53.97%	\$5,195,746
TOTAL EXPENSE	\$26,975,730	\$1,628,487	6.04%	\$15,073,791	55.88%	\$20,231,798

Acct. #	Capital Project Name	Balances at 6/30/08	Current Expenses	Year-to-Date Expenses	Close Outs	Current Balances	Budget Appropriation	Expenses to Date	Unexpended/
									(Over-expended) Appropriation
303000	ACSA Maintenance Yd Imp.	\$33,995	\$0	\$0		\$33,995	\$40,582	\$33,995	\$6,587
304000	ACSA Office Renovations	\$328,050	\$19,805	\$371,445		\$699,495	\$737,500	\$699,495	\$38,005
306000	Woodbrook WL Repl Project	\$755,064	\$36,340	\$670,062		\$1,425,126	\$1,679,996	\$1,425,126	\$254,870
307000	Canterbury Hills & Ednam W Pump	\$60,351	\$0	\$6,700		\$67,051	\$71,000	\$67,051	\$3,949
308000	Scottsville Streetscape Project	\$1,236	\$0	\$0		\$1,236	\$82,000	\$1,236	\$80,764
309000	Glenmore WWTP Eval Project	\$0	\$5,000	\$24,000		\$24,000	\$24,000	\$24,000	\$0
310000	Ragged Mtn Water Proj Ph 1 & 2	\$67,057	\$1,575	\$31,321		\$98,378	\$347,081	\$98,378	\$248,703
312000	Ashcroft Water System Project	\$70,825	\$0	\$8,215		\$79,040	\$73,785	\$79,040	(\$5,255)
314000	West Leigh Dr. Water Line Rep.	\$98,363	\$37,905	\$574,164		\$672,527	\$781,188	\$672,527	\$108,661
315000	Williston & Emerson Dr. WL Rep	\$57,456	\$4,902	\$9,290		\$66,746	\$87,100	\$66,746	\$20,354
316000	Colthurst WL Rep.	\$861,311	\$0	\$4,485		\$865,796	\$822,349	\$865,796	(\$43,447)
317000	Owensville Rd Water Main	\$32,876	\$0	\$241,285		\$274,161	\$287,597	\$274,161	\$13,436
318000	Downtown Crozet Streetscape	\$0	\$2,096	\$6,342		\$6,342	\$6,500	\$6,342	\$158
319000	Camelot Pressure Reducing Valve	\$0	\$1,515	\$26,071		\$26,071	\$45,000	\$26,071	\$18,929
322000	Camp Holiday Trails Water Main	\$37,113	\$13,238	\$225,258		\$262,371	\$260,551	\$262,371	(\$1,820)
323000	Red Hill Water System	\$238,224	\$3,947	\$293,934		\$532,158	\$379,250	\$532,158	(\$152,908)
327000	Scottsville Ph. 1 W&S Project	\$90,801	\$115,035	\$615,500		\$706,301	\$772,547	\$706,301	\$66,246
341000	Georgetown Grn S Rehab	\$123,352	\$0	\$0		\$123,352	\$185,156	\$123,352	\$61,804
342000	Oak Hill Sewer Project	\$55,017	\$3,633	\$38,122		\$93,139	\$83,605	\$93,139	(\$9,534)
343000	Camelot WWTP Program	\$4,969	\$0	\$0		\$4,969	\$15,000	\$4,969	\$10,031
344000	Camelot WWTP Upgrade	\$0	\$2,600	\$144,007		\$144,007	\$423,500	\$144,007	\$279,493
345000	Boar's Head Inn Sewer Repl Proj	\$31,400	\$0	\$5,739		\$37,139	\$332,583	\$37,139	\$295,444
346000	Crozet Sewer Pump Station	\$0	\$0	\$0		\$0	\$71,477	\$0	\$71,477
347000	Old Forge Sewer Pump Station	\$0	\$0	\$0		\$0	\$78,377	\$0	\$78,377
350000	Stonehenge Sewer Relining	\$189,756	\$0	\$9,395		\$199,151	\$171,046	\$199,151	(\$28,105)
352000	Berkeley Sewer Lining Project	\$233,222	\$0	\$0		\$233,222	\$308,878	\$233,222	\$75,656
353000	Kappa Sigma - WL	\$0	\$0	\$0		\$0	\$7,624	\$0	\$7,624
354000	Kappa Sigma - SL	\$0	\$0	\$0		\$0	\$8,682	\$0	\$8,682
355000	Barterbrook/Scottsville S Relining	\$572,163	\$0	(\$9,396)		\$562,767	\$578,351	\$562,767	\$15,584
356000	North Fork Pump Station Project	\$10,026	\$56,541	\$242,387		\$252,413	\$1,069,800	\$252,413	\$817,387
357000	Meadowcreek Drainage Basin SSES	\$122,055	\$57,588	\$214,187		\$336,242	\$464,057	\$336,242	\$127,815
358000	Grgtown Grn Pump Stn Generator	\$5,105	\$13,040	\$21,892		\$26,997	\$12,350	\$26,997	(\$14,647)
359000	Northfields Sewer	\$110,706	\$95	\$8,568		\$119,274	\$444,108	\$119,274	\$324,834
360000	ACSA Construction Crew	\$0	\$0	\$0		\$0	\$81,335	\$0	\$81,335
361000	Scottsville Fire Hydrant Repl.	\$0	\$2,032	\$4,699		\$4,699	\$29,805	\$4,699	\$25,106
362000	Rt. 22/250 Hydrant Relocation	\$0	\$0	(\$6,085)		(\$6,085)	\$10,900	(\$6,085)	\$16,985
363000	Montvue Water Main Repl	\$0	\$0	\$0		\$0	\$8,000	\$0	\$8,000
364000	Frederick Cl Water Main Repl	\$6,258	\$0	\$0		\$6,258	\$26,900	\$6,258	\$20,642
365000	King George's Cl Water Main Repl	\$18,160	\$0	\$0		\$18,160	\$17,700	\$18,160	(\$460)
366000	East Market St Water Main Repl	\$0	\$0	\$0		\$0	\$18,400	\$0	\$18,400
367000	Univ. Commons Water Main Repl	\$0	\$0	\$0		\$0	\$13,600	\$0	\$13,600
368000	Pen Park Ln Water Main Repl	\$7,774	\$0	\$0		\$7,774	\$6,500	\$7,774	(\$1,274)
369000	Avemore Water Main Project	\$27,508	\$0	\$0		\$27,508	\$27,508	\$27,508	\$0
370000	Lockesley Terrace S Repl	\$52,967	\$0	\$0		\$52,967	\$52,967	\$52,967	\$0
375000	Geographical Info System	\$263,822	\$0	(\$47,761)		\$216,061	\$340,373	\$216,061	\$124,312
376000	Comprehensive W&S Modeling	\$71,642	\$0	\$0		\$71,642	\$71,800	\$71,642	\$159
393000	¹ Pump Station Fencing Projects	\$2,515	\$0	\$0		\$2,515	\$15,000	\$2,515	\$12,485
394000	² Pump Station Paving Projects	\$915	\$0	\$0		\$915	\$33,400	\$915	\$32,485
397000	Oversizing Agreements	\$0	\$0	\$0		\$0	\$31,825	\$0	\$31,825
399000	Miscellaneous Const.	\$0	\$0	\$4,774		\$4,774	\$10,000	\$4,774	\$5,226
		\$4,642,050	\$376,886	\$3,738,601	\$0	\$8,380,651	\$11,548,633	\$8,380,651	\$3,167,983

³ Equipment Replacement Expenses: \$12,947 \$117,937
 Building Maintenance Expenses: \$0 \$0

3R Fund Balance \$6,260,470
Less Designation for Equipment Replacement: (\$719,954)
Less Designation for Building Maintenance: (\$93,907)
Less Unexpended Appropriations: (\$3,425,431)
Unappropriated Balance: \$2,021,178
Additional Appropriations Needed: \$257,450
3R Fund Available Balance: \$1,763,728

¹ Briarwood & Oak Forest

² Northfields, Georgetown Green, Ednam, Crozet, & Redfields

³ Details - Page 2

**Equipment Replacement Expenses
FY-09**

Operating Equipment

Asset No.	Date	Description	Cost
			Total \$ <u>-</u>

Automotive Equipment

Asset No.	Date	Description	Cost
302472	10/31/2008	2009 F350 Extended Cab Truck	\$ 25,472.22
302475	1/12/2009	2009 Sterling 7500 Cab & Chassis	\$ 77,156.46
			Total \$ <u>102,628.68</u>

Office Equipment

Asset No.	Date	Description	Cost
303707	7/24/2008	Herman Miller Customer Service Workstations	\$ 2,762.97
33708		Sensus Handheld & Charger	\$ 6,272.71
33709		Sensus Handheld & Charger	\$ 6,272.71
			Total \$ <u>15,308.39</u>

Radio Equipment

Asset No.	Date	Description	Cost
			Total \$ <u>-</u>
			Grand Total \$ <u><u>117,937.07</u></u>

[Picture]

Albemarle County Service Authority
Five Column Balance Sheet with Year to Date Activity
As of Period Ending March 31, 2009

Date:

	YTD Opening Balance	YTD Debits	YTD Credits	Net Change	YTD Closing Balance
ASSETS					
----- Current Assets -----					
Cash	2,137,516.34	54,214,790.55	53,813,533.39	401,257.16	2,538,773.50
Unrestricted Investments	3,834,157.67	6,371,433.81	6,656,381.63	(284,947.82)	3,549,209.85
Interest Purchased Receivable	15,399.98				15,399.98
Accounts Receivable	1,154,779.33	15,885,976.68	15,912,420.74	(26,444.06)	1,128,335.27
Contracts Receivable Current					
Inventory	253,757.20	255,613.48	257,543.29	(1,929.81)	251,827.39
PrePaid Expenses	76,859.86	14,944.30	76,859.86	(61,915.56)	14,944.30
Total Current Assets	7,472,470.38	76,742,758.82	76,716,738.91	26,019.91	7,498,490.29
----- Restricted Assets -----					
Restricted Cash	207,415.13	4,333,225.23	4,328,231.43	4,993.80	212,408.93
Restricted Investments	7,091,477.31	777,044.35	703,686.35	73,358.00	7,164,835.31
Interest Receivable - Restricted	37,703.41				37,703.41
Total Restricted Assets	7,336,595.85	5,110,269.58	5,031,917.78	78,351.80	7,414,947.65
----- Other Assets -----					
Contracts Receivable Less Current	120,664.80		3,201.78	(3,201.78)	117,463.02
Total Other Assets	120,664.80	0.00	3,201.78	(3,201.78)	117,463.02
----- Utility Plant -----					
Utility Plant	107,270,821.09	2,594,645.18	30,484.81	2,564,160.37	109,834,981.46
Accumulated Depreciation	(25,243,294.12)	30,484.81	1,695,831.50	(1,665,346.69)	(26,908,640.81)
Construction In Progress	4,642,049.58	4,356,685.92	626,589.82	3,730,096.10	8,372,145.68
Total Utility Plant	86,669,576.55	6,981,815.91	2,352,906.13	4,628,909.78	91,298,486.33
Total ASSETS	101,599,307.58	88,834,844.31	84,104,764.60	4,730,079.71	106,329,387.29
LIABILITIES					
----- Current Liabilities -----					
Accounts Payable	1,320,520.10	8,499,015.63	7,178,881.53	(1,320,134.10)	386.00
Payables Cash	86,946.91	6,436,224.61	6,379,713.31	(56,511.30)	30,435.61
Revenue Bonds Payable, Current	345,100.00	345,100.00		(345,100.00)	
Interest Payable	12,444.83	12,444.83		(12,444.83)	
Accrued Payroll	278,398.10	255,102.57	291,021.79	35,919.22	314,317.32

[Picture]

Albemarle County Service Authority
Five Column Balance Sheet with Year to Date Activity
As of Period Ending March 31, 2009

Customer Deposits Payable	94,615.88	15,565.69	22,761.04	7,195.35	101,811.23
Total Current Liabilities	2,138,025.82	15,563,453.33	13,872,377.67	(1,691,075.66)	446,950.16
----- Long Term Liabilities -----					
Revenue Bonds Payable, less current	721,600.00				721,600.00
Deferred Income	310,919.84				310,919.84
Total Long Term Liabilities	1,032,519.84	0.00	0.00	0.00	1,032,519.84
Total LIABILITIES	3,170,545.66	15,563,453.33	13,872,377.67	(1,691,075.66)	1,479,470.00
EQUITY					
----- Equity -----					
Contributions From Developers	39,696,978.98				39,696,978.98
Contributions from Governments	1,095,691.18				1,095,691.18
Contributions from Customers	11,874,679.00				11,874,679.00
Total Equity	52,667,349.16	0.00	0.00	0.00	52,667,349.16
----- Retained Earnings -----					
Retained Earnings - Reserved	5,990,734.02				5,990,734.02
Undesignated Retained Earnings	39,770,678.74				39,770,678.74
Total Retained Earnings	45,761,412.76	0.00	0.00	0.00	45,761,412.76
Year-to-date Net Income				6,421,155.37	6,421,155.37
Total EQUITY	98,428,761.92	0.00	0.00	6,421,155.37	104,849,917.29
Total Liabilities and Equity	101,599,307.58	15,563,453.33	13,872,377.67	4,730,079.71	106,329,387.29



Albemarle County Service Authority
Income Statement for Period and Year-to-Date
For March 2009

Date:

	PTD Postings	YTD Postings
SALES		
----- Operating Revenues -----		
Water & Sewer Revenue WS/REV	1,368,297.34	14,387,381.00
Water/Sewer Connection Fc W/S CNC	13,202.41	133,114.67
Total Operating Revenues	1,381,499.75	14,520,495.67
Total SALES	1,381,499.75	14,520,495.67
Gross Margin	1,381,499.75	14,520,495.67
EXPENSES		
----- Operating Expenses -----		
Miscellaneous operating ex Cust Int	194.60	934.48
Rivanna Operating expense Expense	767,204.24	6,939,451.27
Departmental Operating Ex Admin.	102,354.79	988,586.28
Departmental Operating Ex Finance	93,072.79	904,703.66
Departmental Operating Ex Engr.	92,693.42	871,466.85
Departmental Operating Ex Maint.	63,155.21	1,390,315.40
Total Operating Expenses	1,118,675.05	11,095,457.94
Total EXPENSES	1,118,675.05	11,095,457.94
Net Income from Operations	262,824.70	3,425,037.73
OTHER INCOME		
----- Non Operating Revenue -----		
Non-Operating Revenue RWSA R€	6,779.06	73,903.77
Non-Operating Revenue Curr int	3,410.53	88,410.18
Non-Operating Revenue Misc Rev	131,890.54	331,676.09
Non-Operating Revenue CUSDEVI	245,624.50	4,198,068.50
Total Non Operating Revenue	387,704.63	4,692,058.54
----- Non Operating Expenses -----		
Non-Operating Expenses Dbt Svc		(12,591.07)
Non-Operating Expenses Misc	(11.74)	(63.75)
Equipment Replacement Ex Deprec	89,300.53	12,545.42
Non-cash Outlays Deprec	(191,055.84)	(1,695,831.50)
Total Non Operating Expenses	(101,767.05)	(1,695,940.90)
Total OTHER INCOME	285,937.58	2,996,117.64
Net Income after taxes	548,762.28	6,421,155.37

ACCOUNT	CODE	TOTAL INVESTED	INTEREST RECEIVABLE
Water & Sewer Revenue	116-006	\$ 625,270.11	\$ 744.13
Customer Deposits	120-022	\$ 78,365.38	\$ 74.58
Operating Reserves	116-018	\$ 2,623,575.35	\$ 7,869.56
Unemployment	120-024	\$ 20,596.80	\$ 19.60
3R Reserves	120-030	\$ 7,066,237.51	\$ 23,804.27
TOTALS		<u>\$ 10,414,045.15</u>	<u>\$ 32,512.13</u>

Average Maturity 1,327 Days

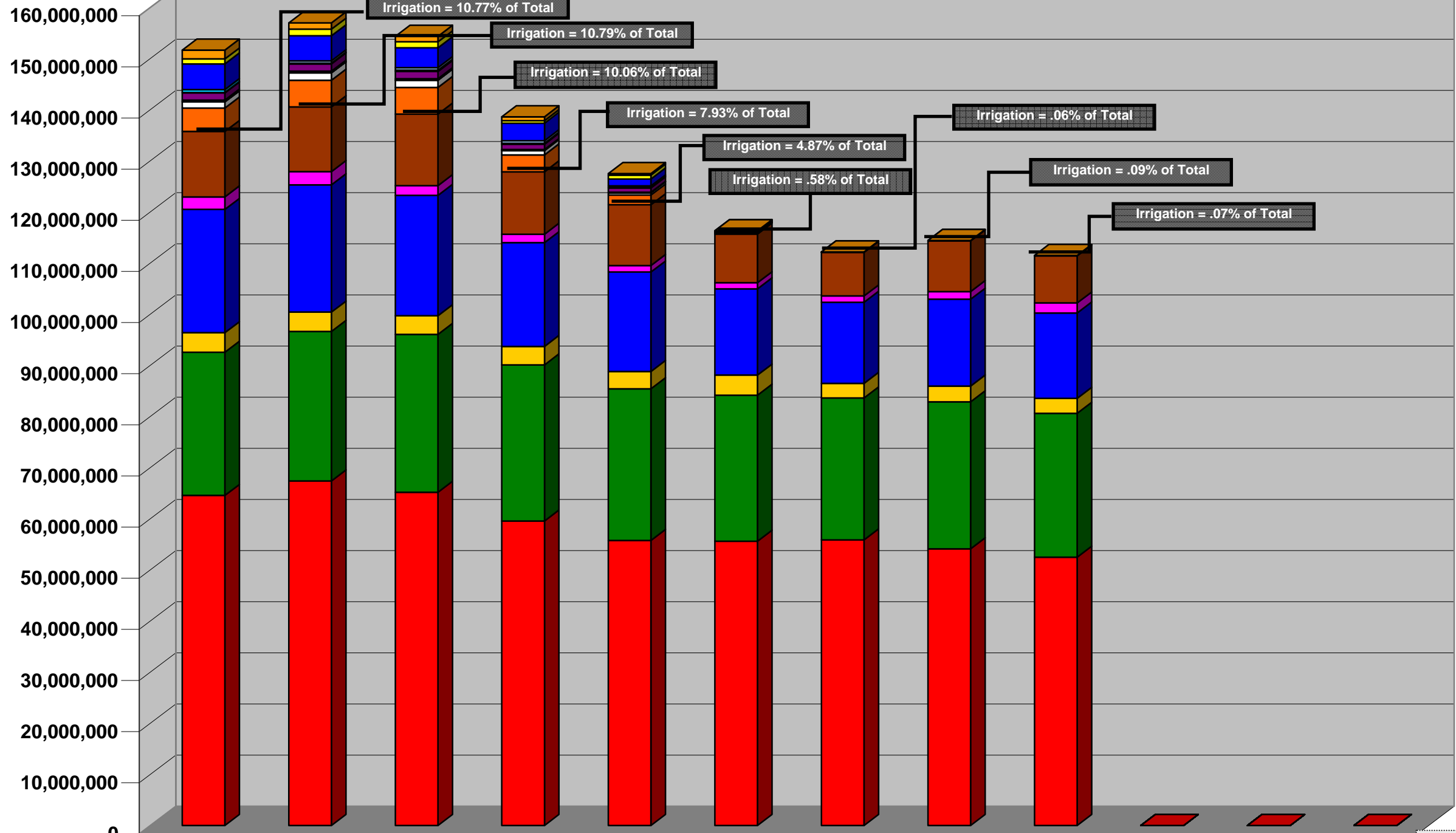
Yield 3.99%

Albemarle County
Service Authority

Monthly Water
Consumption

(in Gallons)

Fiscal Year 2009



	July	Aug.	Sept.	Oct.	Nov.	Dec.	Jan.	Feb.	Mar.	Apr.	May	June
Institutional - Irrigation & Auxiliary	1,729,200	1,241,000	1,076,600	757,800	303,700	1,000	0	0	7,100	0	0	0
Institutional - Irrigation through Exclusion	972,300	1,287,600	1,173,900	491,600	785,700	37,700	16,900	2,900	12,300	0	0	0
Comm. (Other) - Irrigation & Auxiliary	5,011,600	4,892,700	3,873,300	3,427,400	1,335,600	206,800	19,700	24,300	45,400	0	0	0
Comm. (Other) - Irrigation through Exclusion	595,200	440,200	504,500	495,100	257,000	0	0	0	600	0	0	0
Offices - Irrigation & Auxiliary	75,000	156,400	257,500	198,800	159,200	32,900	0	0	0	0	0	0
Offices - Irrigation through Exclusion	1,383,000	1,431,900	1,396,000	1,044,400	838,600	196,000	0	0	0	0	0	0
MFR - Irrigation & Auxiliary	310,400	300,400	283,600	112,900	72,800	20,000	0	0	0	0	0	0
MFR - Irrigation through Exclusion	57,600	8,600	22,400	108,700	19,000	2,300	900	0	1,900	0	0	0
SFR - Irrigation & Auxiliary	1,197,700	1,467,600	1,411,000	826,400	438,300	62,100	10,200	67,300	8,500	0	0	0
SFR - Irrigation through Exclusion	4,580,300	5,194,900	5,220,600	3,295,000	1,908,900	85,200	6,600	400	3,300	0	0	0
Institutional - Domestic Consumption	12,799,600	12,681,300	13,998,300	12,218,400	11,872,300	9,525,100	8,545,200	9,897,300	9,227,700	0	0	0
Industrial	2,453,800	2,585,000	1,883,500	1,651,600	1,287,200	1,195,500	1,238,100	1,518,700	1,949,300	0	0	0
Comm. (Other) - Domestic Consumption	24,115,300	24,882,100	23,547,700	20,297,100	19,453,600	16,871,900	15,871,800	16,977,000	16,706,300	0	0	0
Offices - Domestic Consumption	3,830,000	3,794,700	3,642,500	3,601,200	3,377,400	3,938,300	2,828,900	3,092,100	2,920,200	0	0	0
MFR - Domestic Consumption	27,991,800	29,236,925	30,883,950	30,556,325	29,672,450	28,548,800	27,784,375	28,750,050	28,150,050	0	0	0
SFR - Domestic Consumption	64,565,892	67,391,950	65,192,575	59,546,208	55,750,653	55,613,441	55,860,657	54,111,951	52,481,425	0	0	0

Types of Irrigation Meters:
Irrigation: Water meter dedicated to the service of an irrigation system only.
Auxiliary: Water meter dedicated to the service of an irrigation system when the property's non-irrigation needs are supplied by a primary meter.
Exclusion: Grandfathered, pre-auxiliary, customer owned water meter used to exclude sewer charges for water supplied to the irrigation system.

Albemarle County Service Authority

Number of Billed Water Connections by Class

	July	August	Sept.	Oct.	Nov.	Dec.	Jan.	Feb.	March	April	May	June
S/F Residential	14,728	14,743	14,772	14,771	14,780	14,823	14,810	14,837	14,848	0	0	0
M/F Residential ¹	8,506	8,508	8,506	8,504	8,500	8,504	8,598	8,598	8,596	0	0	0
Comm. (Offices)	361	362	363	363	363	364	364	364	365	0	0	0
Comm. (Other)	1,142	1,145	1,147	1,154	1,157	1,155	1,153	1,149	1,156	0	0	0
Industrial	21	21	21	21	21	21	21	21	21	0	0	0
Institutional	1,307	1,307	1,307	1,307	1,307	1,307	1,308	1,308	1,306	0	0	0
TOTAL	26,065	26,086	26,116	26,120	26,128	26,174	26,254	26,277	26,292	0	0	0

Average Water Usage by Class and by Connection (in gallons)

	July	August	Sept.	Oct.	Nov.	Dec.	Jan.	Feb.	March	April	May	June
S/F Residential	4,776	5,023	4,862	4,310	3,931	3,762	3,773	3,652	3,535	0	0	0
M/F Residential ¹	3,334	3,473	3,667	3,619	3,502	3,360	3,232	3,344	3,275	0	0	0
Comm. (Offices)	14,648	14,870	14,590	13,345	12,053	11,448	7,772	8,495	8,001	0	0	0
Comm. (Other)	26,026	26,389	24,347	20,988	18,190	14,787	13,783	14,797	14,492	0	0	0
Industrial	116,848	123,095	89,690	78,648	61,295	56,929	58,957	72,319	92,824	0	0	0
Institutional	11,860	11,637	12,432	10,304	9,917	7,317	6,546	7,569	7,080	0	0	0

¹ Multi-family residential units or apartments, not connections

Single-Family Residential Water Usage

(Including irrigation through exclusion, irrigation, and auxiliary meters)

	FY 2006											
	July	August	September	October	November	December	January	February	March	April	May	June
Tier 1 (0 - 3,000 gallons)	35,337,775	33,207,700	35,206,300	35,464,700	35,269,200	34,901,650	34,592,475	34,505,825	34,444,900	35,023,500	35,698,100	36,076,200
Tier 2 (3,001 - 6,000 gallons)	19,104,300	19,174,500	17,697,025	18,490,500	16,903,100	15,385,975	15,343,350	14,589,500	14,038,975	15,639,700	17,001,975	19,372,775
Tier 3 (over 6,000 gallons)	22,335,225	22,503,600	19,115,750	23,722,050	14,470,025	8,175,700	7,735,700	6,025,200	5,258,000	6,956,100	11,457,000	19,425,300
Total	76,777,300	74,885,800	72,019,075	77,677,250	66,642,325	58,463,325	57,671,525	55,120,525	53,741,875	57,619,300	64,157,075	74,874,275

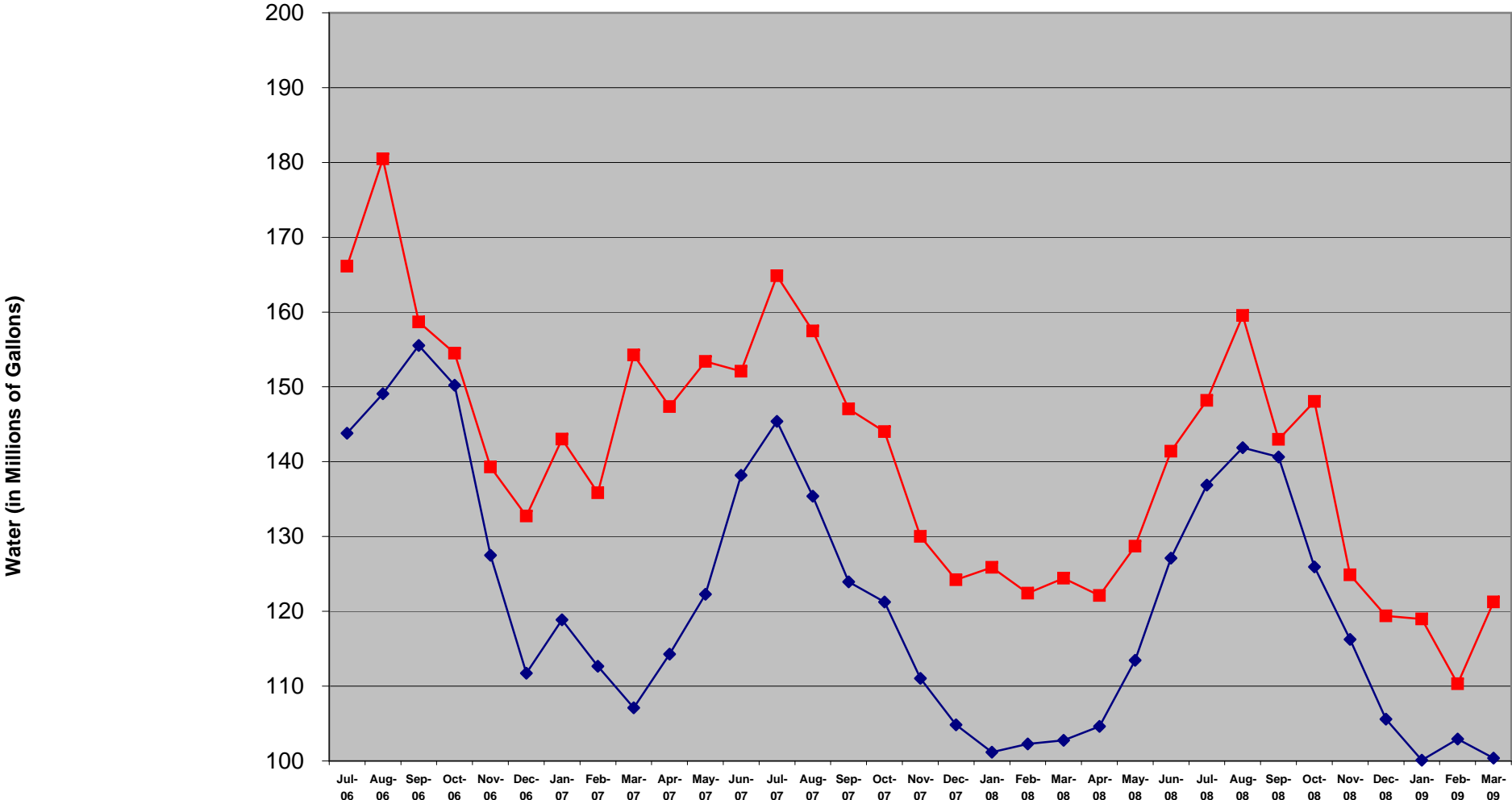
	FY 2007											
	July	August	September	October	November	December	January	February	March	April	May	June
Tier 1 (0 - 3,000 gallons)	35,985,300	35,840,896	36,386,500	36,796,325	36,295,075	35,674,500	36,393,000	35,415,200	35,073,642	35,566,550	36,161,625	36,675,075
Tier 2 (3,001 - 6,000 gallons)	18,659,025	18,168,077	19,406,075	19,749,900	17,771,100	15,707,500	18,692,700	15,876,225	14,591,600	15,368,300	17,108,900	18,744,225
Tier 3 (over 6,000 gallons)	22,330,900	22,456,576	26,083,400	17,914,000	11,309,000	6,609,650	10,192,775	9,683,500	5,447,367	7,104,500	11,390,600	18,476,400
Total	76,975,225	76,465,549	81,875,975	74,460,225	65,375,175	57,991,650	65,278,475	60,974,925	55,112,608	58,039,350	64,661,125	73,895,700

	FY 2008											
	July	August	September	October	November	December	January	February	March	April	May	June
Tier 1 (0 - 3,000 gallons)	36,481,908	35,854,450	35,951,975	36,013,425	35,432,400	35,530,200	35,591,525	35,472,925	35,486,050	35,789,300	36,248,800	36,631,700
Tier 2 (3,001 - 6,000 gallons)	18,569,800	16,229,250	15,498,600	15,381,400	13,727,400	14,005,600	14,924,600	14,110,700	14,010,100	14,170,200	15,313,800	17,142,600
Tier 3 (over 6,000 gallons)	22,542,800	16,535,700	10,190,100	7,803,200	5,838,400	5,328,800	5,588,500	5,450,200	4,672,400	5,022,000	6,878,600	13,301,100
Total	77,594,508	68,619,400	61,640,675	59,198,025	54,998,200	54,864,600	56,104,625	55,033,825	54,168,550	54,981,500	58,441,200	67,075,400

	FY 2009											
	July	August	September	October	November	December	January	February	March	April	May	June
Tier 1 (0 - 3,000 gallons)	36,373,950	36,698,300	36,784,800	36,282,308	36,032,084	36,124,875	35,850,025	35,761,317	35,609,025			
Tier 2 (3,001 - 6,000 gallons)	16,788,267	17,860,800	16,829,900	15,331,000	14,398,467	14,507,400	14,606,700	13,705,700	13,054,200			
Tier 3 (over 6,000 gallons)	17,579,975	21,362,550	18,499,575	12,221,400	7,875,900	5,234,967	5,420,732	4,712,634	3,830,000			
Total	70,742,192	75,921,650	72,114,275	63,834,708	58,306,450	55,867,242	55,877,457	54,179,651	52,493,225	0	0	0

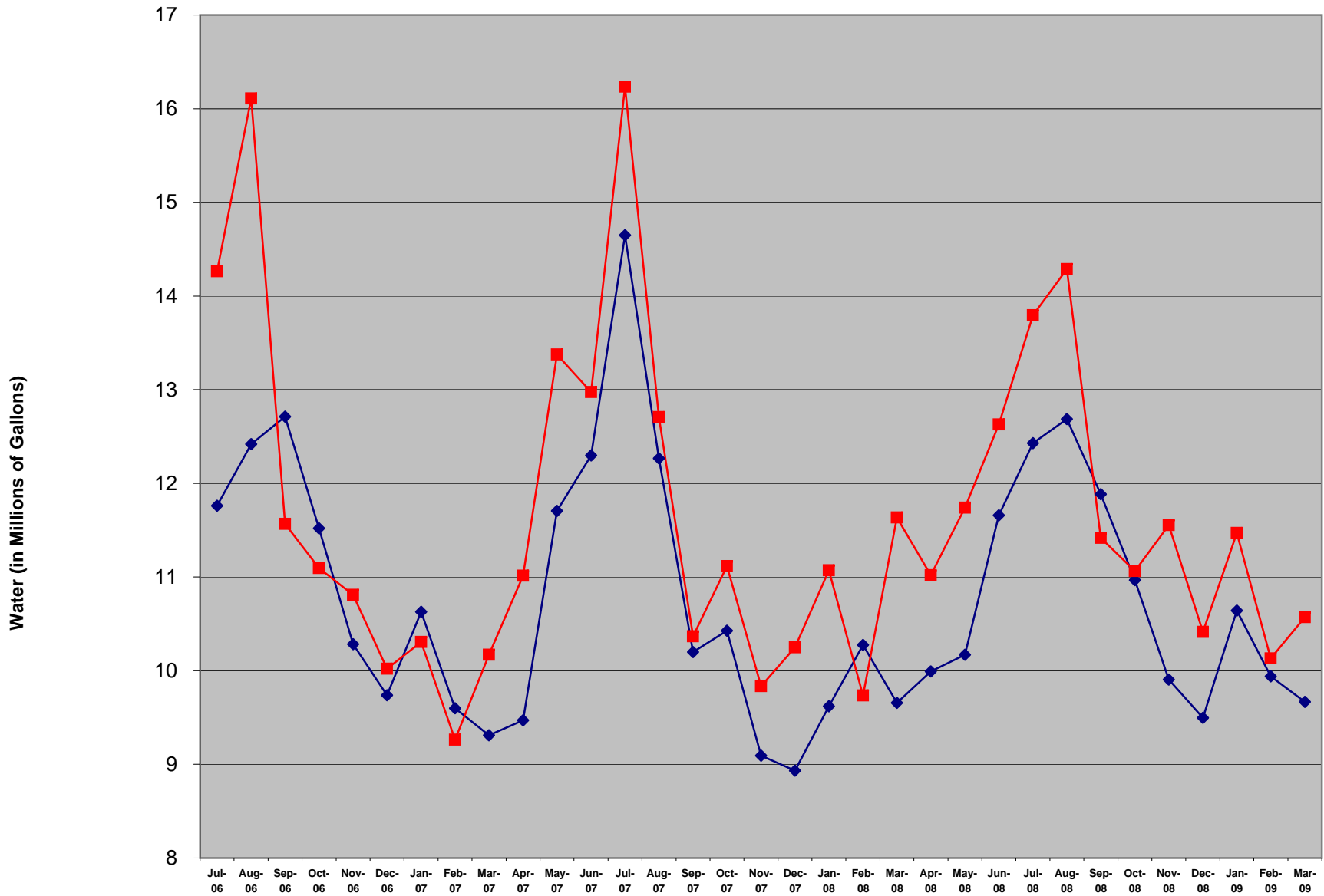
*Corrected in August

FY 2007, 2008, and 2009 Urban Water Comparison - RWSA Flows & ACSA Billings



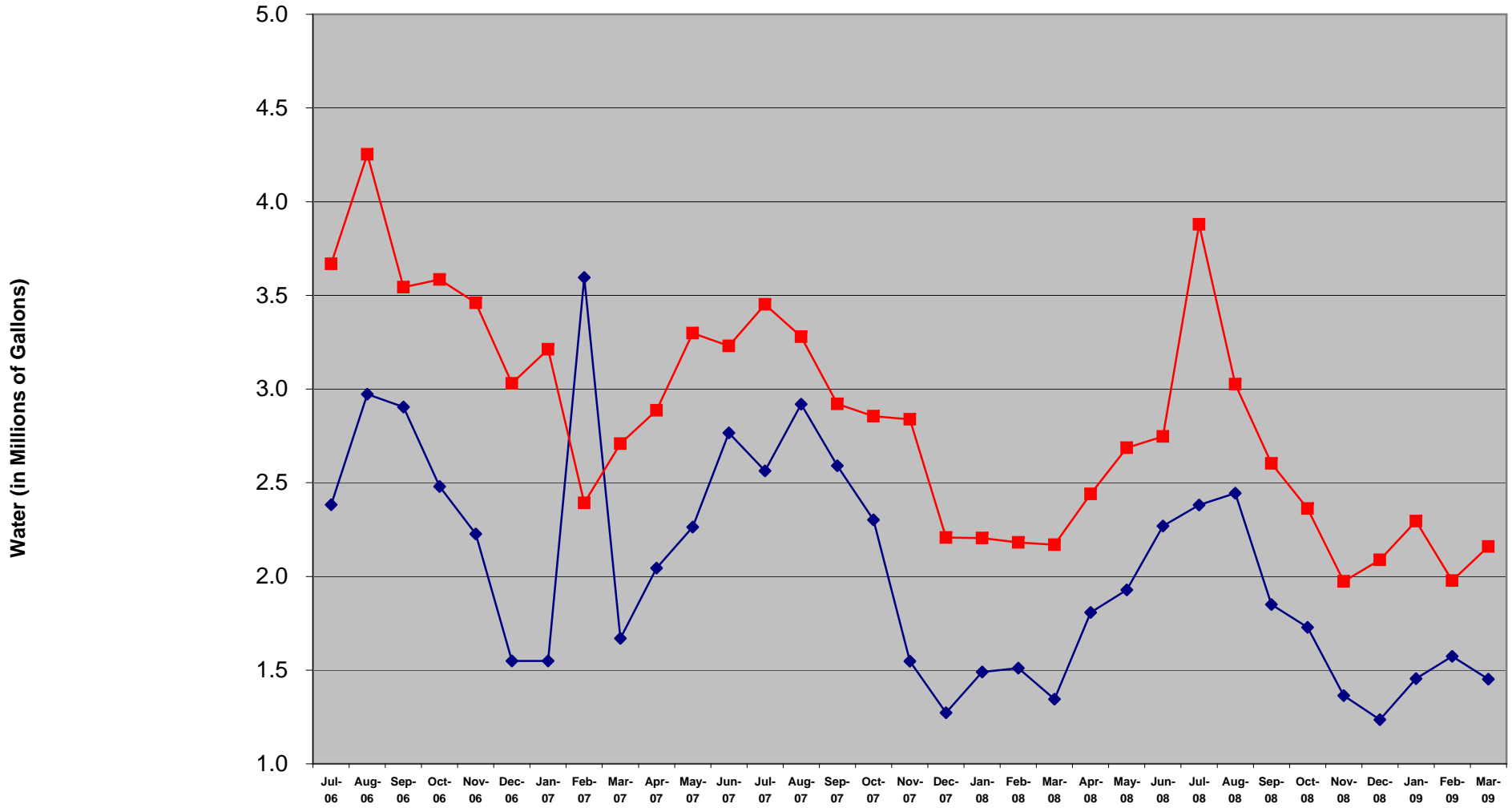
	Jul-06	Aug-06	Sep-06	Oct-06	Nov-06	Dec-06	Jan-07	Feb-07	Mar-07	Apr-07	May-07	Jun-07	Jul-07	Aug-07	Sep-07	Oct-07	Nov-07	Dec-07	Jan-08	Feb-08	Mar-08	Apr-08	May-08	Jun-08	Jul-08	Aug-08	Sep-08	Oct-08	Nov-08	Dec-08	Jan-09	Feb-09	Mar-09
ACSA Billed - Urban Water	144	149	156	150	127	112	119	113	107	114	122	138	145	135	124	121	111	105	101	102	103	105	113	127	137	142	141	126	116	106	100	103	100
RWSA Billed - Urban Flows	166	180	159	155	139	133	143	136	154	147	153	152	165	157	147	144	130	124	126	122	124	122	129	141	148	160	143	148	125	119	119	110	121
Variance - RWSA Treated:ACSA Billed	16%	21%	2%	3%	9%	19%	20%	21%	44%	29%	25%	10%	13%	16%	19%	19%	17%	19%	24%	20%	21%	17%	13%	11%	8%	12%	2%	18%	7%	13%	19%	7%	21%

FY 2007, 2008, and 2009 Crozet Water Comparison - RWSA Flows & ACSA Billings



	Jul-06	Aug-06	Sep-06	Oct-06	Nov-06	Dec-06	Jan-07	Feb-07	Mar-07	Apr-07	May-07	Jun-07	Jul-07	Aug-07	Sep-07	Oct-07	Nov-07	Dec-07	Jan-08	Feb-08	Mar-08	Apr-08	May-08	Jun-08	Jul-08	Aug-08	Sep-08	Oct-08	Nov-08	Dec-08	Jan-09	Feb-09	Mar-09
◆ ACSA Billed -Crozet Water	12	12	13	12	10	10	11	10	9	9	12	12	15	12	10	10	9	9	10	10	10	10	10	12	12	13	12	11	10	9	11	10	10
■ RWSA Billed - Crozet Flows	14	16	12	11	11	10	10	9	10	11	13	13	16	13	10	11	10	10	11	10	12	11	12	13	14	14	11	11	12	10	11	10	11
Variance - RWSA Treated:ACSA Billed	21%	30%	-9%	-4%	5%	3%	-3%	-3%	9%	16%	14%	5%	11%	4%	2%	7%	8%	15%	15%	-5%	20%	10%	15%	8%	11%	13%	-4%	1%	17%	10%	8%	2%	9%

FY 2007, 2008 & 2009 Scottsville Water Comparison - RWSA Flows & ACSA Billings



	Jul-06	Aug-06	Sep-06	Oct-06	Nov-06	Dec-06	Jan-07	Feb-07	Mar-07	Apr-07	May-07	Jun-07	Jul-07	Aug-07	Sep-07	Oct-07	Nov-07	Dec-07	Jan-08	Feb-08	Mar-08	Apr-08	May-08	Jun-08	Jul-08	Aug-08	Sep-08	Oct-08	Nov-08	Dec-08	Jan-09	Feb-09	Mar-09
ACSA Billed - Scottsville Water	2.4	3.0	2.9	2.5	2.2	1.5	1.5	3.6	1.7	2.0	2.3	2.8	2.6	2.9	2.6	2.3	1.5	1.3	1.5	1.5	1	2	2	2	2.4	2.4	1.9	1.7	1.4	1.2	1.5	1.6	1.5
RWSA Billed - Scottsville Flows	3.7	4.3	3.5	3.6	3.5	3.0	3.2	2.4	2.7	2.9	3.3	3.2	3.5	3.3	2.9	2.9	2.8	2.2	2.2	2.2	2	2	3	3	3.9	3.0	2.6	2.4	2.0	2.1	2.3	2.0	2.2
Variance - RWSA Treated:ACSA Billed	54%	43%	22%	45%	55%	96%	107%	-33%	62%	41%	46%	17%	35%	12%	13%	24%	83%	73%	48%	44%	61%	35%	39%	21%	63%	24%	41%	37%	45%	69%	58%	26%	49%

Albemarle County Service Authority
 Complete Check Register
 Current File, 03/01/09 to 03/13/09
 All Accounts, Sessions 000000 to 002892

Date:

Payment / Vendor

Information	Check	Ck Date	Prity	Invoice	Session	Reference	Amount
Checking Account:	100-100-018						
WALKER / April Walker	35414	3/2/2009	M	PAYT022709	002892	REIMB FOOD	76.86
	WALKER Subtotal :						76.86
	Total For Check Account:						76.86
Checking Account:	100-100-020						
GOLDSG / Gold's Gym	27988	3/13/2009	1	PAYT031209	002890	THOMAS	77.98
	GOLDSG Subtotal :						77.98
TREAS4 / Treasurer of Virginia	27989	3/13/2009	1	PAYT031209		*V 03/12/09	873.32
	TREAS4 Subtotal :						0.00
TREAS4 / Treasurer of Virginia	27991	3/13/2009	1	PAYT031209	002890		873.32
	TREAS4 Subtotal :						873.32
	Total For Check Account:						951.30
Checking Account:	201-200-084						
ABCEXT / ABC Extinguishers, LLC	35415	3/13/2009	1	ABC1723	002891		68.10
	ABCEXT Subtotal :						68.10
ACSA / Albemarle County Service Authorit	35416	3/13/2009	1	PAYT031109	002891	PETTY CASH	142.73
	ACSA Subtotal :						142.73
ADVAN1 / Advance Auto Parts	35417	3/13/2009	1	FEB09	002891	ON ACCOUNT	446.54
	ADVAN1 Subtotal :						446.54
ADVAN4 / Advance Safety Equipment Co.	35418	3/13/2009	1	12608	002891		220.07
	ADVAN4 Subtotal :						220.07
ADVANO / Advantage Office Systems	35419	3/13/2009	1	25134	002891		563.99
ADVANO / Advantage Office Systems	35419	3/13/2009	1	25221	002891		162.99

Albemarle County Service Authority
 Complete Check Register
 Current File, 03/01/09 to 03/13/09
 All Accounts, Sessions 000000 to 002892

Date:

Payment / Vendor

Information	Check	Ck Date	Prity	Invoice	Session	Reference	Amount
					ADVANO Subtotal :		726.98
AGDILL / A. G. Dillard, Inc.	35420	3/13/2009	1	ESTNO#6	002891	SPO#7598	37905.00
					AGDILL Subtotal :		37905.00
ALBEMA / Albemarle Lock & Safe Company, In	35421	3/13/2009	1	4463	002891		21.00
					ALBEMA Subtotal :		21.00
ALBIST / Albiston Associates	35422	3/13/2009	1	1309	002891		240.00
					ALBIST Subtotal :		240.00
ALLIED / Allied Concrete Company	35423	3/13/2009	1	000434821	002891		59.30
					ALLIED Subtotal :		59.30
APPLI1 / Applied Technology & Engineering	35424	3/13/2009	1	10720	002891	SPO#7624	5000.00
					APPLI1 Subtotal :		5000.00
AQUA / Aqua Air Laboratories, Inc.	35425	3/13/2009	1	A89228	002891		350.00
					AQUA Subtotal :		350.00
BAILEY / Bailey Printing, Inc.	35426	3/13/2009	1	69662	002891		356.00
					BAILEY Subtotal :		356.00
BANK / Bank of America	35427	3/13/2009	1	FEB09	002891	CORP. ACCT	5598.88
					BANK Subtotal :		5598.88
BARRAC / Barracks West Apartments	35428	3/13/2009	1	PAYT022609	002891	TOILET REB	79.00
					BARRAC Subtotal :		79.00
Employee	35429	3/13/2009	1	CAFE030909	002891	CHILD CARE	390.00
Employee	35429	3/13/2009	1	PAYTO01270	002891	TRAVEL ADV	80.00
					Subtotal :		470.00
BFI / Allied Waste Services	35430	3/13/2009	1	000350292	002891	A-2010536	124.62

Albemarle County Service Authority
 Complete Check Register
 Current File, 03/01/09 to 03/13/09
 All Accounts, Sessions 000000 to 002892

Date:

Payment / Vendor

Information	Check	Ck Date	Prity	Invoice	Session	Reference	Amount
BFI Subtotal :							124.62
BLUE / Blue Ridge Builders Supply	35431	3/13/2009	1	FEB09	002891	A-1009-CON	28.94
BLUE Subtotal :							28.94
Employee	35432	3/13/2009	1	CAFE030209	002891	MED. REIMB	20.00
Subtotal :							20.00
BROWN1 / Dennis T. Brown	35433	3/13/2009	1	PAYT021109	002891	TRAVEL ADV	300.88
BROWN1 Subtotal :							300.88
CAPITA / Capital Lighting & Supply	35434	3/13/2009	1	004571141	002891		130.51
CAPITA / Capital Lighting & Supply	35434	3/13/2009	1	004573807	002891		48.81
CAPITA / Capital Lighting & Supply	35434	3/13/2009	1	004611454	002891		104.87
CAPITA Subtotal :							284.19
CAVAL2 / Cavalier Septic Service, LLC	35435	3/13/2009	1	4672	002891		250.00
CAVAL2 Subtotal :							250.00
CHARL4 / Charlottesville Truck Repair, Inc	35436	3/13/2009	1	057780		*V 03/12/09	198.94
CHARL4 / Charlottesville Truck Repair, Inc	35436	3/13/2009	1	057917		*V 03/12/09	16.00
CHARL4 / Charlottesville Truck Repair, Inc	35436	3/13/2009	1	057922		*V 03/12/09	67.00
CHARL4 Subtotal :							0.00
CHATHA / Chatham Ridge Homeowner's Assoc.	35437	3/13/2009	1	PAYT030209		*V 03/12/09	100.00
CHATHA Subtotal :							0.00
CITY1 / City of Charlottesville	35438	3/13/2009	1	AMBROS0309		*V 03/12/09	1.47
CITY1 / City of Charlottesville	35438	3/13/2009	1	AVON0309		*V 03/12/09	11.47
CITY1 Subtotal :							0.00
CLEARC / Clear Communication &	35439	3/13/2009	1	78777		*V 03/12/09	146.74
CLEARC Subtotal :							0.00

Albemarle County Service Authority
 Complete Check Register
 Current File, 03/01/09 to 03/13/09
 All Accounts, Sessions 000000 to 002892

Date:

Payment / Vendor

Information	Check	Ck Date	Prity	Invoice	Session	Reference	Amount
COLONI / Colonial Ford Truck Sales, Inc.	35440	3/13/2009	1	39203		*V 03/12/09	100.00
COLONI Subtotal :							0.00
CROZE1 / Crozet Hardware Co., Inc.	35441	3/13/2009	1	FEB09	002891	ON ACCOUNT	20.11
CROZE1 Subtotal :							20.11
DAILY / The Daily Progress	35442	3/13/2009	1	FEB09	002891	A-3309559	290.93
DAILY Subtotal :							290.93
DATAW / Data West Corporation	35443	3/13/2009	1	INV022809	002891		1050.00
DATAW Subtotal :							1050.00
DEFIBA / Billy Defibaugh	35444	3/13/2009	1	PAYT012609	002891	TRAVEL ADV	80.00
DEFIBA Subtotal :							80.00
DOMIN3 / Dominion Virginia Power	35445	3/13/2009	1	BLDGFEB09	002891	9995400000	2952.61
DOMIN3 / Dominion Virginia Power	35445	3/13/2009	1	PETERAPR09	002891	3827498456	164.47
DOMIN3 / Dominion Virginia Power	35445	3/13/2009	1	RT810MAR09	002891	2396032506	159.03
DOMIN3 / Dominion Virginia Power	35445	3/13/2009	1	SANDAPR09	002891	9115297500	163.18
DOMIN3 / Dominion Virginia Power	35445	3/13/2009	1	TREMMAR09	002891	5925565003	324.42
DOMIN3 / Dominion Virginia Power	35445	3/13/2009	1	WHSEFEB09	002891	0005480009	627.83
DOMIN3 Subtotal :							4391.54
DRAPER / Draper Aden Associates	35446	3/13/2009	1	2009010462	002891	SPO#7635	2535.78
DRAPER / Draper Aden Associates	35446	3/13/2009	1	2009010474	002891	SPO#7635	1097.13
DRAPER Subtotal :							3632.91
EARTHV / Earth Vector Systems, LLC	35447	3/13/2009	1	4020913	002891		375.00
EARTHV Subtotal :							375.00
FERGUS / Ferguson Enterprises, Inc.	35448	3/13/2009	1	1592234	002891	PO#7679	6327.60

Albemarle County Service Authority
 Complete Check Register
 Current File, 03/01/09 to 03/13/09
 All Accounts, Sessions 000000 to 002892

Date:

Payment / Vendor

Information	Check	Ck Date	Prity	Invoice	Session	Reference	Amount
FERGUS / Ferguson Enterprises, Inc.	35448	3/13/2009	1	1596048	002891	PO#7679	276.40
FERGUS / Ferguson Enterprises, Inc.	35448	3/13/2009	1	1597540	002891		177.16
FERGUS / Ferguson Enterprises, Inc.	35448	3/13/2009	1	1598338	002891		34.31
FERGUS / Ferguson Enterprises, Inc.	35448	3/13/2009	1	1598350	002891		65.01
FERGUS / Ferguson Enterprises, Inc.	35448	3/13/2009	1	1600215	002891		218.85
FERGUS Subtotal :							7099.33
FIRSTM / First Med, Inc.	35449	3/13/2009	1	INV022309	002891		517.00
FIRSTM Subtotal :							517.00
FISHER / Fisher Auto Parts, Inc.	35450	3/13/2009	1	FEB09	002891		325.40
FISHER Subtotal :							325.40
FOSTE2 / Foster's Pest Control, Inc.	35451	3/13/2009	1	26492	002891		65.00
FOSTE2 Subtotal :							65.00
GODWIP / Godwin Pumps of America, Inc.	35452	3/13/2009	1	0766931	002891	PO#7775	1266.00
GODWIP Subtotal :							1266.00
HANNAN / Dennis Hannan	35453	3/13/2009	1	PAYT022609	002891		100.00
HANNAN Subtotal :							100.00
HDSUPP / HD Supply Waterworks, Ltd.	35454	3/13/2009	1	8587519	002891		309.00
HDSUPP / HD Supply Waterworks, Ltd.	35454	3/13/2009	1	8623319	002891	PO#7776	1515.42
HDSUPP / HD Supply Waterworks, Ltd.	35454	3/13/2009	1	8635534	002891		104.31
HDSUPP Subtotal :							1928.73
HERRDO / Douglas G. Herr	35455	3/13/2009	1	PAYT012709	002891	TRAVEL ADV	80.00
HERRDO Subtotal :							80.00
IKON / IKON Office Soluntions, Inc.	35456	3/13/2009	1	5010646666	002891		544.14
IKON Subtotal :							544.14

Albemarle County Service Authority
 Complete Check Register
 Current File, 03/01/09 to 03/13/09
 All Accounts, Sessions 000000 to 002892

Date:

Payment / Vendor

Information	Check	Ck Date	Prity	Invoice	Session	Reference	Amount
JAMES / James River Solutions	35457	3/13/2009	1	296684	002891		1273.97
JAMES / James River Solutions	35457	3/13/2009	1	296688	002891		746.98
JAMES Subtotal :							2020.95
Employee	35458	3/13/2009	1	CAFE031009	002891	MED. REIMB	550.81
Subtotal :							550.81
LINCO / Linco, Inc.	35459	3/13/2009	1	SCOTTS#8	002891	SPO#7607	115035.15
LINCO / Linco, Inc.	35459	3/13/2009	1	WOOD#12	002891	SPO#7606	36339.78
LINCO Subtotal :							151374.93
LOWES / Lowe's Companies, Inc.	35460	3/13/2009	1	FEB09	002891	9900033064	1155.98
LOWES Subtotal :							1155.98
LUCKST / Luck Stone Corporation	35461	3/13/2009	1	883627	002891		700.60
LUCKST Subtotal :							700.60
Employee	35462	3/13/2009	1	CAFE031109	002891	MED. REIMB	37.92
Subtotal :							37.92
MADISO / Montie Madison	35463	3/13/2009	1	PAYT030509	002891	TRAVEL ADV	75.00
MADISO Subtotal :							75.00
MAILIN / Mailing Services of Virginia	35464	3/13/2009	1	0902161	002891		403.10
MAILIN / Mailing Services of Virginia	35464	3/13/2009	1	0902214	002891		382.40
MAILIN / Mailing Services of Virginia	35464	3/13/2009	1	0903034	002891		288.50
MAILIN Subtotal :							1074.00
MAJORS / Major Safety Service, Inc.	35465	3/13/2009	1	433643	002891		59.28
MAJORS Subtotal :							59.28
MARTI2 / Martin Hardware, Inc.	35466	3/13/2009	1	23305	002891	A-10011	12.49
MARTI2 Subtotal :							12.49

Albemarle County Service Authority
 Complete Check Register
 Current File, 03/01/09 to 03/13/09
 All Accounts, Sessions 000000 to 002892

Date:

Payment / Vendor

Information	Check	Ck Date	Prity	Invoice	Session	Reference	Amount
MFRIED / Mark S. Friedlander, DDS PC	35467	3/13/2009	1	CAFE031109	002891		13.40
MFRIED Subtotal :							13.40
MILLER / Miller's Office Products	35468	3/13/2009	1	107747	002891		284.37
MILLER / Miller's Office Products	35468	3/13/2009	1	112592	002891		35.82
MILLER Subtotal :							320.19
MULLIN / Sheryl E. Mullinex	35469	3/13/2009	1	PAYT030209	002891	TOILET REB	100.00
MULLIN Subtotal :							100.00
OFFICC / Office Cleaning Services, Inc.	35470	3/13/2009	1	3323	002891	SPO#7604	3350.00
OFFICC Subtotal :							3350.00
OFFICE / Office Depot Credit Plan	35471	3/13/2009	1	FEB09	002891	ON ACCOUNT	571.51
OFFICE Subtotal :							571.51
PACKNM / Pack 'N' Mail	35472	3/13/2009	1	FEB09	002891	ACCOUNT1	21.71
PACKNM Subtotal :							21.71
PAULET / W. F. Paulett & Son, Inc.	35473	3/13/2009	1	59735/1	002891		9.99
PAULET / W. F. Paulett & Son, Inc.	35473	3/13/2009	1	60437/1	002891		15.98
PAULET Subtotal :							25.97
PLPOWE / P & L Power Equipment	35474	3/13/2009	1	13064	002891		22.69
PLPOWE Subtotal :							22.69
PROSSE / Michelle Prosser	35475	3/13/2009	1	INV022509	002891		900.00
PROSSE Subtotal :							900.00
RANSOM / Karen Ransom	35476	3/13/2009	1	PAYT030609	002891	TOILET REB	200.00
RANSOM Subtotal :							200.00
RELEE / R. E. Lee & Son, Inc.	35477	3/13/2009	1	APPLIC#8	002891	PO#7782	20760.00

Albemarle County Service Authority
 Complete Check Register
 Current File, 03/01/09 to 03/13/09
 All Accounts, Sessions 000000 to 002892

Date:

Payment / Vendor

Information	Check	Ck Date	Prity	Invoice	Session	Reference	Amount
RELEE Subtotal :							20760.00
RHDONN / Dex	35478	3/13/2009	1	FEB09	002891	300118889	51.78
RHDONN Subtotal :							51.78
RIVAN1 / Rivanna Solid Waste Authority	35479	3/13/2009	1	FEB09	002891	ACCT. 70	259.52
RIVAN1 Subtotal :							259.52
RIVAN2 / Rivanna Water & Sewer Authority	35480	3/13/2009	1	06923	002891		2045.50
RIVAN2 / Rivanna Water & Sewer Authority	35480	3/13/2009	1	06935	002891		143.44
RIVAN2 / Rivanna Water & Sewer Authority	35480	3/13/2009	1	REQ7785	002891	BUCK MTN.	27500.00
RIVAN2 Subtotal :							29688.94
SAUNDE / Saunders Construction Company, In	35481	3/13/2009	1	CAMP#5	002891	SPO#7626	11476.52
SAUNDE Subtotal :							11476.52
SPECIA / Specialty Fasteners of Ch'ville	35482	3/13/2009	1	138159	002891		47.92
SPECIA / Specialty Fasteners of Ch'ville	35482	3/13/2009	1	138201	002891		11.92
SPECIA / Specialty Fasteners of Ch'ville	35482	3/13/2009	1	138214	002891		2.69
SPECIA / Specialty Fasteners of Ch'ville	35482	3/13/2009	1	138270	002891		51.86
SPECIA Subtotal :							114.39
SPRINT / Embarq	35483	3/13/2009	1	CROZET0309	002891	4348234346	34.55
SPRINT / Embarq	35483	3/13/2009	1	DSL0309	002891	4349773586	633.53
SPRINT / Embarq	35483	3/13/2009	1	GEORG0309	002891	4349731782	38.77
SPRINT / Embarq	35483	3/13/2009	1	MAIN0309	002891	4349774511	869.62
SPRINT / Embarq	35483	3/13/2009	1	MILLC0309	002891	4342932554	40.47
SPRINT Subtotal :							1616.94
Employee	35484	3/13/2009	1	CAFE030609	002891	MED. REIMB	10.00
Employee	35484	3/13/2009	1	CAFE031109	002891	MED. REIMB	10.00
Subtotal :							20.00
STJOHN / St John Bowling & Lawrence LLP	35485	3/13/2009	1	10913	002891	PO#7783	2373.50

Albemarle County Service Authority
 Complete Check Register
 Current File, 03/01/09 to 03/13/09
 All Accounts, Sessions 000000 to 002892

Date:

Payment / Vendor

Information	Check	Ck Date	Prity	Invoice	Session	Reference	Amount
STJOHN Subtotal :							2373.50
STOLZ / Courtney Stolz	35486	3/13/2009	1	PAYT030909	002891	TOILET REB	100.00
STOLZ Subtotal :							100.00
SUPERS / Super Shoe Stores, Inc.	35487	3/13/2009	1	0031851-IN	002891		199.97
SUPERS Subtotal :							199.97
SUPPLY / The Supply Room Companies, Inc.	35488	3/13/2009	1	1202287-0	002891		204.78
SUPPLY / The Supply Room Companies, Inc.	35488	3/13/2009	1	1202287-1	002891		5.20
SUPPLY / The Supply Room Companies, Inc.	35488	3/13/2009	1	1207072-0	002891		81.88
SUPPLY / The Supply Room Companies, Inc.	35488	3/13/2009	1	1209449-0	002891		48.36
SUPPLY Subtotal :							340.22
SWARTZ / Peter Swartz	35489	3/13/2009	1	PAYT021109	002891	TRAVEL ADV	260.88
SWARTZ Subtotal :							260.88
SYDNOR / Sydnor Industrial Pipe & Supply	35490	3/13/2009	1	57026	002891		421.90
SYDNOR Subtotal :							421.90
TIGERF / Tiger Fuel Company	35491	3/13/2009	1	00052780	002891	A-98045500	541.20
TIGERF Subtotal :							541.20
UNDERW / Calvin Underwood	35492	3/13/2009	1	PAYT012709	002891	TRAVEL ADV	80.00
UNDERW Subtotal :							80.00
UNIFIR / UniFirst Corporation	35493	3/13/2009	1	2020554758	002891		430.25
UNIFIR / UniFirst Corporation	35493	3/13/2009	1	2020555556	002891		518.81
UNIFIR Subtotal :							949.06
UNITE2 / United Rentals, Inc.	35494	3/13/2009	1	79824492-1	002891		67.50
UNITE2 / United Rentals, Inc.	35494	3/13/2009	1	79826801-1	002891		102.00
UNITE2 / United Rentals, Inc.	35494	3/13/2009	1	79848099-1	002891		135.00

Albemarle County Service Authority
 Complete Check Register
 Current File, 03/01/09 to 03/13/09
 All Accounts, Sessions 000000 to 002892

Date:

Payment / Vendor

Information	Check	Ck Date	Prity	Invoice	Session	Reference	Amount
UNITE2 / United Rentals, Inc.	35494	3/13/2009	1	79848392-1	002891		192.00
UNITE2 Subtotal :							496.50
USABLU / USABlueBook	35495	3/13/2009	1	764849	002891		340.32
USABLU / USABlueBook	35495	3/13/2009	1	769948	002891		131.61
USABLU Subtotal :							471.93
VAELEV / Virginia Elevator Co., Inc.	35496	3/13/2009	1	21192	002891		203.00
VAELEV / Virginia Elevator Co., Inc.	35496	3/13/2009	1	21304	002891		158.00
VAELEV Subtotal :							361.00
VARURA / Virginia Rural Water Assoc.	35497	3/13/2009	1	RENEW09-10	002891		250.00
VARURA Subtotal :							250.00
VATRAC / Virginia Tractor	35498	3/13/2009	1	2023662	002891		68.50
VATRAC Subtotal :							68.50
VAUTIL / Virginia Utility Protection Servi	35499	3/13/2009	1	02090003	002891		632.00
VAUTIL Subtotal :							632.00
WEBROW / W. E. Brown, Inc.	35500	3/13/2009	1	ESTNO#2	002891	SPO#7762	13040.00
WEBROW Subtotal :							13040.00
WHITMA / Whitman, Requardt & Associates, L	35501	3/13/2009	1	13-46438	002891	SPO#7784	1575.00
WHITMA / Whitman, Requardt & Associates, L	35501	3/13/2009	1	17-46436	002891	SPO#7652	4901.84
WHITMA / Whitman, Requardt & Associates, L	35501	3/13/2009	1	3-46466001	002891	7740&7781	54953.28
WHITMA Subtotal :							61430.12
WILLIA / S. L. Williamson Company, Inc.	35502	3/13/2009	1	00041436	002891		238.80
WILLIA / S. L. Williamson Company, Inc.	35502	3/13/2009	1	00041442	002891		419.40
WILLIA Subtotal :							658.20

Albemarle County Service Authority
 Complete Check Register
 Current File, 03/01/09 to 03/13/09
 All Accounts, Sessions 000000 to 002892

Date:

Payment / Vendor

Information	Check	Ck Date	Prity	Invoice	Session	Reference	Amount
WORLDV / WorldView Solutions, Inc.	35503	3/13/2009	1	10554	002891	SPO#7780	2560.00
WORLDV Subtotal :							2560.00
WRIGHT / Harry A. Wright's, Inc.	35504	3/13/2009	1	151367	002891		145.00
WRIGHT / Harry A. Wright's, Inc.	35504	3/13/2009	1	151380	002891		60.00
WRIGHT Subtotal :							205.00
CHARL4 / Charlottesville Truck Repair, Inc	35505	3/13/2009	1	057780	002891		198.94
CHARL4 / Charlottesville Truck Repair, Inc	35505	3/13/2009	1	057917	002891		16.00
CHARL4 / Charlottesville Truck Repair, Inc	35505	3/13/2009	1	057922	002891		67.00
CHARL4 Subtotal :							281.94
CHATHA / Chatham Ridge Homeowner's Assoc.	35506	3/13/2009	1	PAYT030209	002891	TOILET REB	100.00
CHATHA Subtotal :							100.00
CITY1 / City of Charlottesville	35507	3/13/2009	1	AMBROS0309	002891	A-1045904	1.47
CITY1 / City of Charlottesville	35507	3/13/2009	1	AVON0309	002891	A-1048121	11.47
CITY1 Subtotal :							12.94
CLEARC / Clear Communication &	35508	3/13/2009	1	78777	002891		146.74
CLEARC Subtotal :							146.74
COLONI / Colonial Ford Truck Sales, Inc.	35509	3/13/2009	1	39203	002891		100.00
COLONI Subtotal :							100.00
Total For Check Account:				201-200-084			387115.44
Check Register Total :							388143.60
RIVAN2/Rivanna Water & Sewer Authority		3/10/2009		Bulk Water & Sewer Transfer			737515.30
Check Register & Wire Total:							1125658.90

Albemarle County Service Authority
 Complete Check Register
 Current File, 03/16/09 to 03/31/09
 All Accounts, Sessions 000000 to 002901

Date:

Payment / Vendor

Information	Check	Ck Date	Prty	Invoice	Session	Reference	Amount
Checking Account:	100-100-020						
ACAC / ACAC	27994	3/31/2009	1	114227851	002900	R. LAWSON	162.00
ACAC / ACAC	27994	3/31/2009	1	PAYT032709	002900	P. GORHAM	76.00
ACAC Subtotal :							238.00
CITY3 / Treasurer, City of Charlottesville	27995	3/31/2009	1	PAYT032709	002900		208.09
CITY3 Subtotal :							208.09
COUNT1 / County of Albemarle	27996	3/31/2009	1	DPRE033109	002900	DENTAL PRE	527.00
COUNT1 / County of Albemarle	27996	3/31/2009	1	HPRE033109	002900	HEALTH PRE	872.68
COUNT1 Subtotal :							1399.68
HBESKI / Herbert L. Beskin, Trustee	27997	3/31/2009	1	PAYT032709	002900		1051.00
HBESKI Subtotal :							1051.00
MINNES / Minnesota Life Insurance Company	27998	3/31/2009	1	PAYT032709	002900	LIFE INS.	62.16
MINNES Subtotal :							62.16
TREAS4 / Treasurer of Virginia	27999	3/31/2009	1	PAYT032709	002900		873.32
TREAS4 Subtotal :							873.32
Total For Check Account:				100-100-020			3832.25
Checking Account:	140-104-030						
COUNT2 / County of Albemarle	35510	3/16/2009	M	REQ7786	002892	SITE PLAN	1587.80
COUNT2 Subtotal :							1587.80
Total For Check Account:				140-104-030			1587.80
Checking Account:	201-200-084						
/ ** ALIGNMENT **	35511	3/31/2009	S	ALIGNMENT		ALIGNMENT	0.00
Subtotal :							0.00

Albemarle County Service Authority
 Complete Check Register
 Current File, 03/16/09 to 03/31/09
 All Accounts, Sessions 000000 to 002901

Date:

Payment / Vendor

Information	Check	Ck Date	Prity	Invoice	Session	Reference	Amount
ADVAN2 / Advanced Short Schools	35512	3/31/2009	1	PAYT032709	002901	T. BROWN	140.00
ADVAN2 Subtotal :							140.00
ADVAN4 / Advance Safety Equipment Co.	35513	3/31/2009	1	13141	002901		260.01
ADVAN4 Subtotal :							260.01
ADVANO / Advantage Office Systems	35514	3/31/2009	1	25257	002901		211.29
ADVANO Subtotal :							211.29
ALLTEL / Alltel	35515	3/31/2009	1	MARCH09	002901	7301839986	982.38
ALLTEL Subtotal :							982.38
AMERI1 / American Life Assurance	35516	3/31/2009	1	PAYT032709	002901	MCALLISTER	4.72
AMERI1 Subtotal :							4.72
APPALA / Appalachian Power	35517	3/31/2009	1	JAMES0209	002901	0206600370	88.37
APPALA / Appalachian Power	35517	3/31/2009	1	RT7950209	002901	0229422570	47.45
APPALA Subtotal :							135.82
ATT / AT & T	35518	3/31/2009	1	MARCH09	002901	4349774511	268.80
ATT Subtotal :							268.80
AUTOZO / AutoZone, Inc.	35519	3/31/2009	1	469	002901	A-213718	32.95
AUTOZO Subtotal :							32.95
Employee	35520	3/31/2009	1	CAFE031209	002901	MED. REIMB	30.00
Subtotal :							30.00
BATTLE / Battlefield Ford Jeep	35521	3/31/2009	1	83127	002901	PO#7787	1001.63
BATTLE / Battlefield Ford Jeep	35521	3/31/2009	1	83492	002901	PO#7787	146.76
BATTLE / Battlefield Ford Jeep	35521	3/31/2009	1	83897	002901	PO#7787	40.53
BATTLE Subtotal :							1188.92

Albemarle County Service Authority
 Complete Check Register
 Current File, 03/16/09 to 03/31/09
 All Accounts, Sessions 000000 to 002901

Date:

Payment / Vendor

Information	Check	Ck Date	Prty	Invoice	Session	Reference	Amount
BOBS / Bob's Wheel Alignment, Inc.	35522	3/31/2009	1	17955	002901		12.50
BOBS Subtotal :							12.50
BUTNER / Eleanor Butner	35523	3/31/2009	1	PAYT032009	002901	TOILET REB	100.00
BUTNER Subtotal :							100.00
CAMPB1 / Campbell Equipment	35524	3/31/2009	1	INV032309	002901		65.49
CAMPB1 Subtotal :							65.49
CAPITA / Capital Lighting & Supply	35525	3/31/2009	1	0046244302	002901		0.34
CAPITA / Capital Lighting & Supply	35525	3/31/2009	1	S004574005	002901		142.50
CAPITA / Capital Lighting & Supply	35525	3/31/2009	1	S004624430	002901		0.90
CAPITA / Capital Lighting & Supply	35525	3/31/2009	1	S004624628	002901		345.10
CAPITA / Capital Lighting & Supply	35525	3/31/2009	1	S004635721	002901		141.34
CAPITA / Capital Lighting & Supply	35525	3/31/2009	1	S004641083	002901		54.57
CAPITA / Capital Lighting & Supply	35525	3/31/2009	1	S004641162	002901		152.05
CAPITA / Capital Lighting & Supply	35525	3/31/2009	1	S004679290	002901		21.42
CAPITA Subtotal :							858.22
CHARL0 / Charlottesville Automotive	35526	3/31/2009	1	2-86062	002901		27.35
CHARL0 / Charlottesville Automotive	35526	3/31/2009	1	2-86104	002901		4.49
CHARL0 Subtotal :							31.84
CHARL4 / Charlottesville Truck Repair, Inc	35527	3/31/2009	1	057982	002901		32.00
CHARL4 / Charlottesville Truck Repair, Inc	35527	3/31/2009	1	057993	002901		16.00
CHARL4 / Charlottesville Truck Repair, Inc	35527	3/31/2009	1	057994	002901		16.00
CHARL4 / Charlottesville Truck Repair, Inc	35527	3/31/2009	1	093566	002901		463.53
CHARL4 Subtotal :							527.53
CHATHA / Chatham Ridge Homeowner's Assoc.	35528	3/31/2009	1	PAYT032409	002901	TOILET REB	100.00

Albemarle County Service Authority
 Complete Check Register
 Current File, 03/16/09 to 03/31/09
 All Accounts, Sessions 000000 to 002901

Date:

Payment / Vendor

Information	Check	Ck Date	Prity	Invoice	Session	Reference	Amount
CHATHA Subtotal :							100.00
CITY1 / City of Charlottesville	35529	3/31/2009	1	AMBROS0409	002901	A-1045904	10.00
CITY1 / City of Charlottesville	35529	3/31/2009	1	AVON0409	002901	A-1048121	10.00
CITY1 / City of Charlottesville	35529	3/31/2009	1	RT2500309	002901	A-1023050	10.00
CITY1 / City of Charlottesville	35529	3/31/2009	1	SHOP0409	002901	A-1020814	509.90
CITY1 Subtotal :							539.90
CLEARC / Clear Communication &	35530	3/31/2009	1	79044	002901		126.00
CLEARC Subtotal :							126.00
CONRAY / Robert Conray	35531	3/31/2009	1	PAYT032609	002901	TOILET REB	100.00
CONRAY Subtotal :							100.00
COUNT1 / County of Albemarle	35532	3/31/2009	1	033109DPRE	002901	DENTAL PRE	1963.00
COUNT1 / County of Albemarle	35532	3/31/2009	1	033109HPRE	002901	HEALTH PRE	5460.00
COUNT1 / County of Albemarle	35532	3/31/2009	1	HOSP033109	002901	HOSPITALIZ	39877.32
COUNT1 Subtotal :							47300.32
COUNT2 / County of Albemarle	35533	3/31/2009	1	29000890	002901		95.40
COUNT2 Subtotal :							95.40
DOMIN3 / Dominion Virginia Power	35534	3/31/2009	1	BARRAPR09	002901	3816467504	1715.14
DOMIN3 / Dominion Virginia Power	35534	3/31/2009	1	CSHOPFEB09	002901	4589780156	107.95
DOMIN3 / Dominion Virginia Power	35534	3/31/2009	1	FAULCMAR09	002901	9722152502	15.99
DOMIN3 / Dominion Virginia Power	35534	3/31/2009	1	GEORGMAR09	002901	9694377509	104.67
DOMIN3 / Dominion Virginia Power	35534	3/31/2009	1	LEGO2APR09	002901	0893976829	57.08
DOMIN3 / Dominion Virginia Power	35534	3/31/2009	1	OAKFAPR09	002901	3694115001	117.43
DOMIN3 / Dominion Virginia Power	35534	3/31/2009	1	OLDFAPR09	002901	9634630009	196.84
DOMIN3 / Dominion Virginia Power	35534	3/31/2009	1	OLDLMAR09	002901	1450713233	189.02
DOMIN3 / Dominion Virginia Power	35534	3/31/2009	1	ROLLHMAR09	002901	2624300006	43.61
DOMIN3 / Dominion Virginia Power	35534	3/31/2009	1	ROOKWMAR09	002901	5666293393	5.50

Albemarle County Service Authority
 Complete Check Register
 Current File, 03/16/09 to 03/31/09
 All Accounts, Sessions 000000 to 002901

Date:

Payment / Vendor

Information	Check	Ck Date	Prity	Invoice	Session	Reference	Amount
DOMIN3 / Dominion Virginia Power	35534	3/31/2009	1	RT250MAR09	002901	0771930005	145.05
DOMIN3 / Dominion Virginia Power	35534	3/31/2009	1	RT742APR09	002901	9534967501	174.95
DOMIN3 / Dominion Virginia Power	35534	3/31/2009	1	SUMMIAPR09	002901	4823452430	66.61
DOMIN3 / Dominion Virginia Power	35534	3/31/2009	1	WINTEMAR09	002901	0945818763	30.73
DOMIN3 / Dominion Virginia Power	35534	3/31/2009	1	WOODMAR09	002901	0093014934	182.01
DOMIN3 Subtotal :							3152.58
DRAPER / Draper Aden Associates	35535	3/31/2009	1	2009010459	002901	PO#7790	2063.53
DRAPER / Draper Aden Associates	35535	3/31/2009	1	2009020147	002901	SPO#7734	95.00
DRAPER Subtotal :							2158.53
ECKELM / Edward Eckelmeyer	35536	3/31/2009	1	PAYT031709	002901	TOILET REB	100.00
ECKELM Subtotal :							100.00
ECKSUP / Eck Supply	35537	3/31/2009	1	08053900	002901		177.06
ECKSUP Subtotal :							177.06
EMPLOY / Employment Law	35538	3/31/2009	1	PAYT032709	002901		97.00
EMPLOY Subtotal :							97.00
FERGUS / Ferguson Enterprises, Inc.	35539	3/31/2009	1	1600215-1	002901		324.24
FERGUS / Ferguson Enterprises, Inc.	35539	3/31/2009	1	1600918	002901		3.95
FERGUS / Ferguson Enterprises, Inc.	35539	3/31/2009	1	1601294	002901		33.90
FERGUS / Ferguson Enterprises, Inc.	35539	3/31/2009	1	1601442	002901		139.68
FERGUS / Ferguson Enterprises, Inc.	35539	3/31/2009	1	1602482	002901		222.06
FERGUS / Ferguson Enterprises, Inc.	35539	3/31/2009	1	1602541	002901		21.78
FERGUS / Ferguson Enterprises, Inc.	35539	3/31/2009	1	1603720	002901		15.79
FERGUS Subtotal :							761.40
FIRSTM / First Med, Inc.	35540	3/31/2009	1	STAT031709	002901		5.00
FIRSTM Subtotal :							5.00

Albemarle County Service Authority
 Complete Check Register
 Current File, 03/16/09 to 03/31/09
 All Accounts, Sessions 000000 to 002901

Date:

Payment / Vendor

Information	Check	Ck Date	Prty	Invoice	Session	Reference	Amount
GARRYS / Garry's Greenbrier Service LLC	35541	3/31/2009	1	12204	002901		69.58
GARRYS Subtotal :							69.58
GUARDA / Guardian Auto Glass	35542	3/31/2009	1	5645068171	002901		60.00
GUARDA / Guardian Auto Glass	35542	3/31/2009	1	5645068172	002901		199.51
GUARDA Subtotal :							259.51
HAWKIN / Hawkins-Graves, Inc.	35543	3/31/2009	1	104021	002901		475.00
HAWKIN Subtotal :							475.00
HDSUPP / HD Supply Waterworks, Ltd.	35544	3/31/2009	1	8672789	002901		115.00
HDSUPP Subtotal :							115.00
Employee	35545	3/31/2009	1	CAFE032009	002901	MED. REIMB	224.92
Employee	35545	3/31/2009	1	PAYT032509	002901	TRAVEL EXP	292.90
Subtotal :							517.82
HYDRAF / Hydrflo, Inc.	35546	3/31/2009	1	10733	002901		236.00
HYDRAF Subtotal :							236.00
JAMES / James River Solutions	35547	3/31/2009	1	297286	002901		289.49
JAMES / James River Solutions	35547	3/31/2009	1	297292	002901		776.24
JAMES / James River Solutions	35547	3/31/2009	1	297684	002901		707.45
JAMES / James River Solutions	35547	3/31/2009	1	297690	002901		153.39
JAMES / James River Solutions	35547	3/31/2009	1	298056	002901		744.41
JAMES / James River Solutions	35547	3/31/2009	1	298060	002901		418.14
JAMES Subtotal :							3089.12
KEATIN / Denis A. Keating	35548	3/31/2009	1	PAYT031209	002901	TOILET REB	200.00
KEATIN Subtotal :							200.00
KIMLEY / Kimley-Horn and Associates, Inc.	35549	3/31/2009	1	3808511		*V 03/30/09	2095.60

Albemarle County Service Authority
 Complete Check Register
 Current File, 03/16/09 to 03/31/09
 All Accounts, Sessions 000000 to 002901

Date:

Payment / Vendor

Information	Check	Ck Date	Prity	Invoice	Session	Reference	Amount
KIMLEY Subtotal :							0.00
LUCKST / Luck Stone Corporation	35550	3/31/2009	1	885175		*V 03/30/09	386.87
LUCKST Subtotal :							0.00
Employee	35551	3/31/2009	1	CAFE032409		*V 03/30/09	20.00
Subtotal :							0.00
MAILIN / Mailing Services of Virginia	35552	3/31/2009	1	0903105		*V 03/30/09	314.78
MAILIN / Mailing Services of Virginia	35552	3/31/2009	1	0903166		*V 03/30/09	340.10
MAILIN Subtotal :							0.00
MAINTE / Maintenance Engineering Ltd.	35553	3/31/2009	1	2620201-01	002901		224.18
MAINTE Subtotal :							224.18
MARTI3 / Martin Marietta Materials	35554	3/31/2009	1	7517267	002901		108.75
MARTI3 Subtotal :							108.75
MECHUM / Mechums River Security	35555	3/31/2009	1	39838	002901		60.00
MECHUM Subtotal :							60.00
MILLER / Miller's Office Products	35556	3/31/2009	1	118840	002901		673.82
MILLER Subtotal :							673.82
MINNES / Minnesota Life Insurance Company	35557	3/31/2009	1	LIFE032709	002901	LIFE INS.	195.72
MINNES Subtotal :							195.72
MUNICI / Municipal & Financial	35558	3/31/2009	1	09-025	002901	SPO#7768	15271.00
MUNICI Subtotal :							15271.00
OBRIE1 / O'Brien & Gere Engineers, Inc.	35559	3/31/2009	1	1104518	002901	SPO#7755	49197.59
OBRIE1 / O'Brien & Gere Engineers, Inc.	35559	3/31/2009	1	1104523	002901	SPO#7654	4192.91

Albemarle County Service Authority
 Complete Check Register
 Current File, 03/16/09 to 03/31/09
 All Accounts, Sessions 000000 to 002901

Date:

Payment / Vendor

Information	Check	Ck Date	Prty	Invoice	Session	Reference	Amount
OBRIE1 / O'Brien & Gere Engineers, Inc.	35559	3/31/2009	1	1104524	002901	SPO#7714	4197.09
OBRIE1 Subtotal :							57587.59
OFFICC / Office Cleaning Services, Inc.	35560	3/31/2009	1	3351	002901	SPO#7604	3350.00
OFFICC Subtotal :							3350.00
PARRIS / Richard Parrish	35561	3/31/2009	1	PAYT032009	002901	TOILET REB	100.00
PARRIS Subtotal :							100.00
PATRIO / Patriot Diamond, Inc.	35562	3/31/2009	1	93194	002901	PO#7789	1200.00
PATRIO Subtotal :							1200.00
PAULET / W. F. Paulett & Son, Inc.	35563	3/31/2009	1	59178/1	002901		18.76
PAULET / W. F. Paulett & Son, Inc.	35563	3/31/2009	1	60879/1	002901		30.99
PAULET / W. F. Paulett & Son, Inc.	35563	3/31/2009	1	60951/1	002901		6.49
PAULET Subtotal :							56.24
PAULYD / Dana Pauly	35564	3/31/2009	1	PAYT031609	002901	TOILET REB	89.00
PAULYD Subtotal :							89.00
PITMAN / Pitman Company	35565	3/31/2009	1	3166330-00	002901		602.92
PITMAN Subtotal :							602.92
PLPOWE / P & L Power Equipment	35566	3/31/2009	1	13056	002901		91.06
PLPOWE Subtotal :							91.06
POSITI / Positive Promotions	35567	3/31/2009	1	03387883	002901		65.20
POSITI Subtotal :							65.20
PROSSE / Michelle Prosser	35568	3/31/2009	1	INV031309	002901		475.00
PROSSE Subtotal :							475.00
RAPPAH / Rappahannock Electric Cooperative	35569	3/31/2009	1	BRIAR0209	002901	7397720000	56.28
RAPPAH / Rappahannock Electric Cooperative	35569	3/31/2009	1	NRIVAN0209	002901	6397720000	169.59

Albemarle County Service Authority
 Complete Check Register
 Current File, 03/16/09 to 03/31/09
 All Accounts, Sessions 000000 to 002901

Date:

Payment / Vendor

Information	Check	Ck Date	Prity	Invoice	Session	Reference	Amount
RAPPAH Subtotal :							225.87
RAYCAR / Ray Carr Tires, Inc.	35570	3/31/2009	1	02-18033	002901		15.00
RAYCAR Subtotal :							15.00
SAFET1 / Safety Consultants of Virginia, I	35571	3/31/2009	1	2145	002901		365.00
SAFET1 Subtotal :							365.00
SAFEWA / Safeware, Inc.	35572	3/31/2009	1	3123770	002901		368.81
SAFEWA Subtotal :							368.81
SEEK / Patricia Seek	35573	3/31/2009	1	PAYT032609	002901	TOILET REB	200.00
SEEK Subtotal :							200.00
SENSUS / Sensus Metering Systems	35574	3/31/2009	1	ZA90016633	002901		235.00
SENSUS Subtotal :							235.00
SHEPHE / Marguerite Shepherd	35575	3/31/2009	1	PAYT032409	002901	TOILET REB	100.00
SHEPHE Subtotal :							100.00
SPECIA / Specialty Fasteners of Ch'ville	35576	3/31/2009	1	134566	002901		12.20
SPECIA / Specialty Fasteners of Ch'ville	35576	3/31/2009	1	135179	002901		33.14
SPECIA / Specialty Fasteners of Ch'ville	35576	3/31/2009	1	135350	002901		14.98
SPECIA / Specialty Fasteners of Ch'ville	35576	3/31/2009	1	136608	002901		89.96
SPECIA / Specialty Fasteners of Ch'ville	35576	3/31/2009	1	137031	002901		61.95
SPECIA / Specialty Fasteners of Ch'ville	35576	3/31/2009	1	138375	002901		15.21
SPECIA / Specialty Fasteners of Ch'ville	35576	3/31/2009	1	138542	002901		1.09
SPECIA / Specialty Fasteners of Ch'ville	35576	3/31/2009	1	138663	002901		104.24
SPECIA / Specialty Fasteners of Ch'ville	35576	3/31/2009	1	138733	002901		220.32
SPECIA Subtotal :							553.09
SPRINT / Embarq	35577	3/31/2009	1	ASH0409	002901	4342973061	42.01

Albemarle County Service Authority
 Complete Check Register
 Current File, 03/16/09 to 03/31/09
 All Accounts, Sessions 000000 to 002901

Date:

Payment / Vendor

Information	Check	Ck Date	Prty	Invoice	Session	Reference	Amount
SPRINT / Embarq	35577	3/31/2009	1	CHILL0309	002901	4340100113	78.00
SPRINT / Embarq	35577	3/31/2009	1	EDNAM0309	002901	4340100312	117.00
SPRINT / Embarq	35577	3/31/2009	1	MILL0409	002901	4341381000	207.02
SPRINT / Embarq	35577	3/31/2009	1	MOSB0409	002901	4342959260	41.29
SPRINT / Embarq	35577	3/31/2009	1	PETER0409	002901	4349612562	37.73
SPRINT / Embarq	35577	3/31/2009	1	REDF0409	002901	4349844325	44.35
SPRINT / Embarq	35577	3/31/2009	1	SAND0409	002901	4349791184	37.73
SPRINT / Embarq	35577	3/31/2009	1	WOOD0409	002901	4349747537	47.10
SPRINT Subtotal :							652.23
SUPPLY / The Supply Room Companies, Inc.	35578	3/31/2009	1	1213418-0	002901		7.79
SUPPLY Subtotal :							7.79
TRACTO / Tractor Supply	35579	3/31/2009	1	MARCH09	002901	6035301200	857.41
TRACTO Subtotal :							857.41
TREAS3 / Treasurer of Virginia - VRS	35580	3/31/2009	1	LIFE0309	002901	LIFE INS.	1934.99
TREAS3 / Treasurer of Virginia - VRS	35580	3/31/2009	1	RETIRE0309	002901	RETIREMENT	31549.89
TREAS3 Subtotal :							33484.88
UNIFIR / UniFirst Corporation	35581	3/31/2009	1	2020556372	002901		409.26
UNIFIR / UniFirst Corporation	35581	3/31/2009	1	2020557176	002901		433.34
UNIFIR Subtotal :							842.60
UNIVE1 / University of Wisconsin-Madison	35582	3/31/2009	1	REQ7791	002901	J. LYNN	1195.00
UNIVE1 Subtotal :							1195.00
USPOST / U. S. Postmaster	35583	3/31/2009	1	PAYT032509	002901	PERMIT 205	9000.00
USPOST Subtotal :							9000.00
UVAHE1 / University of Va. Medical Center	35584	3/31/2009	1	CAFE032509	002901		57.77
UVAHE1 Subtotal :							57.77
VAELEC / Virginia Electronic Components, I	35585	3/31/2009	1	1231875-01	002901		186.36
VAELEC Subtotal :							186.36
VEPGA / VEPGA	35586	3/31/2009	1	018119	002901	ALBEMA03	72.00

Albemarle County Service Authority
 Complete Check Register
 Current File, 03/16/09 to 03/31/09
 All Accounts, Sessions 000000 to 002901

Date:

Payment / Vendor

Information	Check	Ck Date	Prity	Invoice	Session	Reference	Amount
VEPGA Subtotal :							72.00
VOICEL / VoiceLink Communications	35587	3/31/2009	1	43930	002901		147.75
VOICEL Subtotal :							147.75
WATERW / Water Works Supply Co., Inc.	35588	3/31/2009	1	293749	002901	PO#7627	599.40
WATERW Subtotal :							599.40
WILLIA / S. L. Williamson Company, Inc.	35589	3/31/2009	1	00041490	002901		229.80
WILLIA / S. L. Williamson Company, Inc.	35589	3/31/2009	1	00041510	002901		192.64
WILLIA Subtotal :							422.44
WRIGHT / Harry A. Wright's, Inc.	35590	3/31/2009	1	151753	002901		65.00
WRIGHT Subtotal :							65.00
KIMLEY / Kimley-Horn and Associates, Inc.	35593	3/31/2009	1	3808511	002901	SPO#7645	2095.60
KIMLEY Subtotal :							2095.60
LUCKST / Luck Stone Corporation	35594	3/31/2009	1	885175	002901		386.87
LUCKST Subtotal :							386.87
Employee	35595	3/31/2009	1	CAFE032409	002901	MED. REIMB	20.00
Subtotal :							20.00
MAILIN / Mailing Services of Virginia	35596	3/31/2009	1	0903105	002901		314.78
MAILIN / Mailing Services of Virginia	35596	3/31/2009	1	0903166	002901		340.10
MAILIN Subtotal :							654.88
Total For Check Account:				201-200-084			197486.92
Check Register Total :							202906.97