



MEMORANDUM

To: Board of Directors
From: Gary W. Fern, P.E., Executive Director
Date: June 10, 2009
Re: Consent Agenda - Monthly Financial Reports
cc: James M. Bowling, IV

The following is a summary of the monthly financial reports for May, 2009:

Revenue and Expense Summary

Total Revenues to date \$20,309,483 are below the projected year-to-date, and Total Expenses \$18,225,001 are less than the Total Revenues and projected year-to-date expenses.

Repair, Replacement and Rehabilitation (3R) Fund

The available fund balance after appropriations for cost overruns and unappropriated projects is \$2,020,561. Equipment Replacement Expenses for the year total \$135,490.

Five Column Balance Sheet

The total liabilities to date of \$1,466,342.50 compared to total assets of \$106,819,958.45, results in total net assets of \$105,353,615.95.

Income Statements

The net income for the month is \$53,157.49.

Investment Summary

With total investments of \$10,847,651.17, we have projected interest receivable for the month of May, 2009 of \$29,367.42. The average yield is 3.27%.

ACSA Monthly Water Consumption Graph

Attached for your review this month is a water consumption graph for FY 2009. The total water used in May 2009 was approximately 122,563,145 gallons. This is an increase of approximately 8,580,470 gallons (7.5%) from April 2009 and a decrease of approximately 2,997,780 gallons (2.4%) from May 2008.

We expect to see an increase in water use in the month of June, 2009.

Water Units by Class/Water Usage by Class

The number of invoiced water connections by class increased by 38 since the month of April, 2009. The average water use for single-family residential, multi-family residential, commercial (offices), commercial (other) and institutional increased, while industrial decreased from the previous month. The average single-family residential water use is calculated at 3,897 gallons for the month. The average single-family residential water use is approximately 126 gpd.

Single-Family Residential Water Usage Graph

Single-family residential water usage increased from April, 2009 to May, 2009 by approximately 4,206,353 gallons. The difference in water use between that consumed in May, 2008 and May, 2009 is a decrease of 393,648 gallons. The percentage difference per tier between May, 2008 and May, 2009 is as follows:

Tier	May 2009 (gals.)	May 2008 (gals.)	Difference (gals.)	Percent Difference	Revenue Difference at current rates
One	36,679,538	36,248,800	430,738	1.2%	\$1,662.65
Two	15,345,683	15,313,800	31,883	0.2%	194.49
Three	6,022,331	6,878,600	(856,269)	0.0%	0.00
Total	58,047,553	58,441,200	393,648	N/A	\$1,857.14

RWSA Flows vs. ACSA Billings Graphs

Three (3) graphs are provided which compare the RWSA Billed Water Flows to the ACSA Billed Water Flows in the three systems: Urban Area, Crozet and Scottsville. The resulting difference, as a percentage, is 13%, 13% and 51%, respectively.

Board Action

No Board action is required.

GWF/anw

	Budget	Month	Current Month's % to Budget	Actual Year-to-Date	Year-to-Date % to Budget	Projected Year-to-Date 91.67% of Budget
REVENUES						
Water & Sewer Volume and Service Charges						
Urban		\$1,373,325		\$15,700,736		
Crozet		\$112,565		\$1,356,391		
Scottsville		\$17,029		\$230,057		
Total	\$21,061,018	\$1,502,920	7.14%	\$17,287,184	82.08%	\$19,305,933
Water Connection Charges						
Urban		\$2,086		\$83,981		
Crozet		\$1,669		\$10,680		
Scottsville		\$0		\$4,122		
Total	\$89,800	\$3,755	4.18%	\$98,782	110.00%	\$82,317
Sewer Connection Charges						
Urban		\$588		\$18,658		
Crozet		\$0		\$29,050		
Scottsville		\$0		\$5,590		
Total	\$39,600	\$588	1.48%	\$53,298	134.59%	\$36,300
Customer Contributions						
Water	\$1,014,645	\$80,470		\$923,630		
Sewer	\$1,208,225	\$101,555		\$1,024,414		
Total	\$2,222,870	\$182,025	8.19%	\$1,948,044	87.64%	\$2,037,631
Buck Mountain Surcharge	\$104,600	\$3,200	3.06%	\$49,300	47.13%	\$95,883
Interest	\$450,000	\$2,734	0.61%	\$223,796	49.73%	\$412,500
Miscellaneous	\$485,150	\$1,869	0.39%	\$595,386	122.72%	\$444,721
Transfer for Prior Year Appropriations	\$53,692	\$0	0.00%	\$53,692	100.00%	\$49,218
Transfer for Capital Expenses	\$2,469,000	\$0	0.00%	\$0	0.00%	\$2,263,250
TOTAL REVENUE	\$26,975,730	\$1,697,091	6.29%	\$20,309,483	75.29%	\$24,727,753
EXPENSES						
RWSA - Purchase of Water	\$6,123,902	\$445,272	7.27%	\$4,740,508	77.41%	\$5,613,577
RWSA - Sewer Treatment	\$5,480,564	\$397,609	7.25%	\$3,825,321	69.80%	\$5,023,850
Buck Mountain Surcharge Expense	\$104,600	\$0	0.00%	\$40,400	38.62%	\$95,883
Administration	\$1,495,233	\$107,313	7.18%	\$1,183,391	79.14%	\$1,370,630
Finance	\$1,260,950	\$102,599	8.14%	\$1,098,612	87.13%	\$1,155,871
Engineering	\$1,253,423	\$96,731	7.72%	\$1,065,907	85.04%	\$1,148,971
Maintenance	\$2,271,449	\$348,076	15.32%	\$1,857,307	81.77%	\$2,082,162
800 Code Equipment Expenses	\$475,100	\$29,739	6.26%	\$257,814	54.27%	\$435,508
Operating Reserve	\$568,565	\$0	0.00%	\$0	0.00%	\$521,185
Repair/Replacement Reserves	\$641,585	\$0	0.00%	\$0	0.00%	\$588,120
Debt Service	\$372,700	\$0	0.00%	\$12,591	3.38%	\$341,642
Capital Expenses	\$6,927,660	\$165,657	2.39%	\$4,143,150	59.81%	\$6,350,356
TOTAL EXPENSE	\$26,975,730	\$1,692,995	6.28%	\$18,225,001	67.56%	\$24,727,753

Acct. #	Capital Project Name	Balances at 6/30/08	Current Expenses	Year-to-Date Expenses	Close Outs	Current Balances	Budget Appropriation	Expenses to Date	Unexpended/
									(Over-expended) Appropriation
303000	ACSA Maintenance Yd Imp.	\$33,995	\$0	\$0		\$33,995	\$40,582	\$33,995	\$6,587
304000	ACSA Office Renovations	\$328,050	\$0	\$371,445		\$699,495	\$737,500	\$699,495	\$38,005
306000	Woodbrook WL Repl Project	\$755,064	\$0	\$688,242		\$1,443,306	\$1,679,996	\$1,443,306	\$236,691
307000	Canterbury Hills & Ednam W Pump	\$60,351	\$0	\$6,700		\$67,051	\$71,000	\$67,051	\$3,949
308000	Scottsville Streetscape Project	\$1,236	\$0	\$0		\$1,236	\$82,000	\$1,236	\$80,764
309000	Glenmore WWTP Eval Project	\$0	\$0	\$24,000		\$24,000	\$24,000	\$24,000	\$0
310000	Ragged Mtn Water Proj Ph 1 & 2	\$67,057	\$30,287	\$63,184		\$130,241	\$347,081	\$130,241	\$216,840
312000	Ashcroft Water System Project	\$70,825	\$0	\$8,215		\$79,040	\$73,785	\$79,040	(\$5,255)
314000	West Leigh Dr. Water Line Rep.	\$98,363	\$126	\$574,290		\$672,652	\$781,188	\$672,652	\$108,536
315000	Williston & Emerson Dr. WL Rep	\$57,456	\$4,863	\$14,153		\$71,608	\$87,100	\$71,608	\$15,492
316000	Colthurst WL Rep.	\$861,311	\$0	\$4,485		\$865,796	\$822,349	\$865,796	(\$43,447)
317000	Owensville Rd Water Main	\$32,876	\$0	\$241,285		\$274,161	\$287,597	\$274,161	\$13,436
318000	Downtown Crozet Streetscape	\$0	\$0	\$6,342		\$6,342	\$6,500	\$6,342	\$158
319000	Camelot Pressure Reducing Valve	\$0	\$899	\$27,827		\$27,827	\$45,000	\$27,827	\$17,173
322000	Camp Holiday Trails Water Main	\$37,113	\$0	\$225,258		\$262,371	\$260,551	\$262,371	(\$1,820)
323000	Red Hill Water System	\$238,224	\$7,650	\$374,574		\$612,798	\$379,250	\$612,798	(\$233,548)
327000	Scottsville Ph. 1 W&S Project	\$90,801	\$0	\$615,500		\$706,301	\$772,547	\$706,301	\$66,246
328000	Scottsville Sewer	\$0	\$0	\$126		\$126	\$0	\$126	(\$126)
341000	Georgetown Grn S Rehab	\$123,352	\$0	\$0		\$123,352	\$185,156	\$123,352	\$61,804
342000	Oak Hill Sewer Project	\$55,017	\$0	\$38,122		\$93,139	\$83,605	\$93,139	(\$9,534)
343000	Camelot WWTP Program	\$4,969	\$0	\$0		\$4,969	\$15,000	\$4,969	\$10,031
344000	Camelot WWTP Upgrade	\$0	\$420	\$158,893		\$158,893	\$423,500	\$158,893	\$264,607
345000	Boar's Head Inn Sewer Repl Proj	\$31,400	\$58,062	\$104,697		\$136,097	\$334,060	\$136,097	\$197,963
346000	Crozet Sewer Pump Station	\$0	\$0	\$0		\$0	\$71,477	\$0	\$71,477
347000	Old Forge Sewer Pump Station	\$0	\$0	\$0		\$0	\$78,377	\$0	\$78,377
350000	Stonehenge Sewer Relining	\$189,756	\$0	\$9,395		\$199,151	\$171,046	\$199,151	(\$28,105)
352000	Berkeley Sewer Lining Project	\$233,222	\$0	\$0		\$233,222	\$308,878	\$233,222	\$75,656
353000	Kappa Sigma - WL	\$0	\$0	\$0		\$0	\$7,624	\$0	\$7,624
354000	Kappa Sigma - SL	\$0	\$0	\$0		\$0	\$8,682	\$0	\$8,682
355000	Barterbrook/Scottsville S Relining	\$572,163	\$0	(\$9,396)		\$562,767	\$578,351	\$562,767	\$15,584
356000	North Fork Pump Station Project	\$10,026	\$16,720	\$284,633		\$294,659	\$1,069,800	\$294,659	\$775,141
357000	Meadowcreek Drainage Basin SSES	\$122,055	\$15,120	\$229,307		\$351,362	\$464,057	\$351,362	\$112,695
358000	Grgtown Grn Pump Stn Generator	\$5,105	\$3,349	\$61,199		\$66,304	\$12,350	\$66,304	(\$53,954)
359000	Northfields Sewer	\$110,706	\$300	\$27,248		\$137,954	\$444,108	\$137,954	\$306,154
360000	ACSA Construction Crew	\$0	\$0	\$0		\$0	\$81,335	\$0	\$81,335
361000	Scottsville Fire Hydrant Repl.	\$0	\$5,950	\$20,588		\$20,588	\$29,805	\$20,588	\$9,217
362000	Rt. 22/250 Hydrant Relocation	\$0	\$6,085	\$0		\$0	\$10,900	\$0	\$10,900
363000	Montvue Water Main Repl	\$0	\$0	\$0		\$0	\$8,000	\$0	\$8,000
364000	Frederick Cl Water Main Repl	\$6,258	\$0	\$0		\$6,258	\$26,900	\$6,258	\$20,642
365000	King George's Cl Water Main Repl	\$18,160	\$0	\$0		\$18,160	\$17,700	\$18,160	(\$460)
366000	East Market St Water Main Repl	\$0	\$0	\$0		\$0	\$18,400	\$0	\$18,400
367000	Univ. Commons Water Main Repl	\$0	\$0	\$0		\$0	\$13,600	\$0	\$13,600
368000	Pen Park Ln Water Main Repl	\$7,774	\$0	\$0		\$7,774	\$6,500	\$7,774	(\$1,274)
369000	Avemore Water Main Project	\$27,508	\$0	\$0		\$27,508	\$27,508	\$27,508	\$0
370000	Lockesley Terrace S Repl	\$52,967	\$0	\$0		\$52,967	\$52,967	\$52,967	\$0
375000	Geographical Info System	\$263,822	\$20,600	(\$27,161)		\$236,661	\$340,373	\$236,661	\$103,712
376000	Comprehensive W&S Modeling	\$71,642	\$0	\$0		\$71,642	\$71,800	\$71,642	\$159
393000	¹ Pump Station Fencing Projects	\$2,515	\$0	\$0		\$2,515	\$15,000	\$2,515	\$12,485
394000	² Pump Station Paving Projects	\$915	\$0	\$0		\$915	\$33,400	\$915	\$32,485
397000	Oversizing Agreements	\$0	\$0	\$0		\$0	\$31,825	\$0	\$31,825
399000	Miscellaneous Const.	\$0	(\$4,774)	\$0		\$0	\$10,000	\$0	\$10,000
		\$4,642,050	\$165,657	\$4,143,150	\$0	\$8,785,200	\$11,550,110	\$8,785,200	\$2,764,911

³ Equipment Replacement Expenses: \$53 \$135,490

3R Fund Balance	\$6,260,470
Less Designation for Equipment Replacement:	(\$719,954)
Less Unexpended Appropriations:	(\$3,142,432)
Unappropriated Balance:	<u>\$2,398,084</u>
Additional Appropriations Needed:	<u>\$377,523</u>
3R Fund Available Balance:	<u><u>\$2,020,561</u></u>

¹ Briarwood & Oak Forest

² Northfields, Georgetown Green, Ednam, Crozet, & Redfields

³ Details - Page 2

**Equipment Replacement Expenses
FY-09**

Operating Equipment

Asset No.	Date	Description	Cost
			Total \$ <u>-</u>

Automotive Equipment

Asset No.	Date	Description	Cost
302472	10/31/2008	2009 F350 Extended Cab Truck	\$ 25,472.22
302475	1/12/2009	2009 Sterling 7500 Cab & Chassis	\$ 77,156.46
302447	4/7/2009	2009 Ford Escape	\$ 17,552.46
			Total \$ <u>120,181.14</u>

Office Equipment

Asset No.	Date	Description	Cost
303707	7/24/2008	Herman Miller Customer Service Workstations	\$ 2,762.97
33708		Sensus Handheld & Charger	\$ 6,272.71
33709		Sensus Handheld & Charger	\$ 6,272.71
			Total \$ <u>15,308.39</u>

Radio Equipment

Asset No.	Date	Description	Cost
			Total \$ <u>-</u>
			Grand Total \$ <u>135,489.53</u>

Date:

	YTD Opening Balance	YTD Debits	YTD Credits	Net Change	YTD Closing Balance
ASSETS					
----- Current Assets -----					
Cash	2,137,516.34	65,464,346.68	64,925,181.59	539,165.09	2,676,681.43
Unrestricted Investments	3,834,157.67	7,516,676.39	7,741,830.53	(225,154.14)	3,609,003.53
Interest Purchased Receivable	15,399.98				15,399.98
Accounts Receivable	1,154,779.33	18,944,245.80	18,833,732.98	110,512.82	1,265,292.15
Contracts Receivable Current					
Inventory	253,757.20	298,814.64	311,481.28	(12,666.64)	241,090.56
PrePaid Expenses	76,859.86	15,799.80	76,859.86	(61,060.06)	15,799.80
Total Current Assets	7,472,470.38	92,239,883.31	91,889,086.24	350,797.07	7,823,267.45
----- Restricted Assets -----					
Restricted Cash	207,415.13	5,122,686.91	5,108,631.53	14,055.38	221,470.51
Restricted Investments	7,091,477.31	1,304,334.31	1,157,163.97	147,170.34	7,238,647.65
Interest Receivable - Restricted	37,703.41				37,703.41
Total Restricted Assets	7,336,595.85	6,427,021.22	6,265,795.50	161,225.72	7,497,821.57
----- Other Assets -----					
Contracts Receivable Less Current	120,664.80		3,201.78	(3,201.78)	117,463.02
Total Other Assets	120,664.80	0.00	3,201.78	(3,201.78)	117,463.02
----- Utility Plant -----					
Utility Plant	107,270,821.09	2,661,476.11	204,099.11	2,457,377.00	109,728,198.09
Accumulated Depreciation	(25,243,294.12)	190,050.73	2,078,747.93	(1,888,697.20)	(27,131,991.32)
Construction In Progress	4,642,049.58	4,774,629.34	631,479.28	4,143,150.06	8,785,199.64
Total Utility Plant	86,669,576.55	7,626,156.18	2,914,326.32	4,711,829.86	91,381,406.41
Total ASSETS	101,599,307.58	106,293,060.71	101,072,409.84	5,220,650.87	106,819,958.45
LIABILITIES					
----- Current Liabilities -----					
Accounts Payable	1,320,520.10	9,695,981.05	8,375,479.86	(1,320,501.19)	18.91
Payables Cash	86,946.91	7,453,305.01	7,396,562.61	(56,742.40)	30,204.51
Revenue Bonds Payable, Current	345,100.00	345,100.00		(345,100.00)	
Interest Payable	12,444.83	12,444.83		(12,444.83)	
Accrued Payroll	278,398.10	312,320.23	328,005.26	15,685.03	294,083.13
Customer Deposits Payable	94,615.88	17,935.69	32,835.92	14,900.23	109,516.11

Total Current Liabilities	2,138,025.82	17,837,086.81	16,132,883.65	(1,704,203.16)	433,822.66
----- Long Term Liabilities -----					
Revenue Bonds Payable, less current	721,600.00				721,600.00
Deferred Income	310,919.84				310,919.84
Total Long Term Liabilities	1,032,519.84	0.00	0.00	0.00	1,032,519.84
Total LIABILITIES	3,170,545.66	17,837,086.81	16,132,883.65	(1,704,203.16)	1,466,342.50
EQUITY					
----- Equity -----					
Contributions From Developers	39,696,978.98				39,696,978.98
Contributions from Governments	1,095,691.18				1,095,691.18
Contributions from Customers	11,874,679.00				11,874,679.00
Total Equity	52,667,349.16	0.00	0.00	0.00	52,667,349.16
----- Retained Earnings -----					
Retained Earnings - Reserved	5,990,734.02				5,990,734.02
Undesignated Retained Earnings	39,770,678.74				39,770,678.74
Total Retained Earnings	45,761,412.76	0.00	0.00	0.00	45,761,412.76
Year-to-date Net Income				6,924,854.03	6,924,854.03
Total EQUITY	98,428,761.92	0.00	0.00	6,924,854.03	105,353,615.95
Total Liabilities and Equity	101,599,307.58	17,837,086.81	16,132,883.65	5,220,650.87	106,819,958.45

Albemarle County Service Authority
 Detail Income Statement for Period and Year-to-Date
 May 2009

Date:

		PTD Postings	YTD Postings
SALES			
----- Operating Revenues -----			
	Water & Sewer Revenue	WS/REV	1,502,919.96
	Water/Sewer Connection Fee	W/S CNC	4,342.71
			17,287,183.97
			152,080.39
	Total Operating Revenues		1,507,262.67
			17,439,264.36
	Total SALES		1,507,262.67
			17,439,264.36
	Gross Margin		1,507,262.67
			17,439,264.36
EXPENSES			
----- Operating Expenses -----			
	Miscellaneous operating expe	Cust Int	15.46
	Rivanna Operating expenses	Expense	842,880.22
	Departmental Operating Expe	Admin.	107,312.80
	Departmental Operating Expe	Finance	102,598.84
	Departmental Operating Expe	Engr.	96,731.37
	Departmental Operating Expe	Maint.	348,076.02
			988.95
			8,606,229.31
			1,183,391.31
			1,098,611.53
			1,065,907.06
			1,857,306.80
	Total Operating Expenses		1,497,614.71
			13,812,434.96
	Total EXPENSES		1,497,614.71
			13,812,434.96
	Net Income from Operations		9,647.96
			3,626,829.40
OTHER INCOME			
----- Non Operating Revenue -----			
	Non-Operating Revenue	RWSA Re	6,289.53
	Non-Operating Revenue	Curr int	2,734.44
	Non-Operating Revenue	Misc Rev	(1,220.89)
	Non-Operating Revenue	CUSDEVI	190,530.00
			86,182.83
			223,796.20
			558,503.30
			4,501,610.00
	Total Non Operating Revenue		198,333.08
			5,370,092.33
----- Non Operating Expenses -----			
	Non-Operating Expenses	Dbt Svc	(12,591.37)
	Non-Operating Expenses	Misc	(19.68)
	Equipment Replacement Expe	Deprec	36,808.90
	Non-cash Outlays	Deprec	(191,612.77)
			19,308.90
			(2,078,747.93)
	Total Non Operating Expenses		(154,823.55)
			(2,072,067.70)
	Total OTHER INCOME		43,509.53
			3,298,024.63
	Net Income after taxes		53,157.49
			6,924,854.03

6/9/2009

ACCOUNT	CODE	TOTAL INVESTED	INTEREST RECEIVABLE
Water & Sewer Revenue	116-006	\$ 956,723.60	\$ 1,520.98
Customer Deposits	120-022	\$ 78,473.35	\$ 58.20
Operating Reserves	116-018	\$ 2,652,279.93	\$ 7,257.55
Unemployment	120-024	\$ 20,394.05	\$ 15.13
3R Reserves	120-030	\$ 7,139,780.24	\$ 20,515.57
TOTALS		\$ 10,847,651.17	\$ 29,367.42
Weighted Average Maturity (Days)	1,222		
Weighted Average Interest (Monthly)	3.27%		

The Authority's investments on May 31, 2009 are listed (by type and amount) as follows:

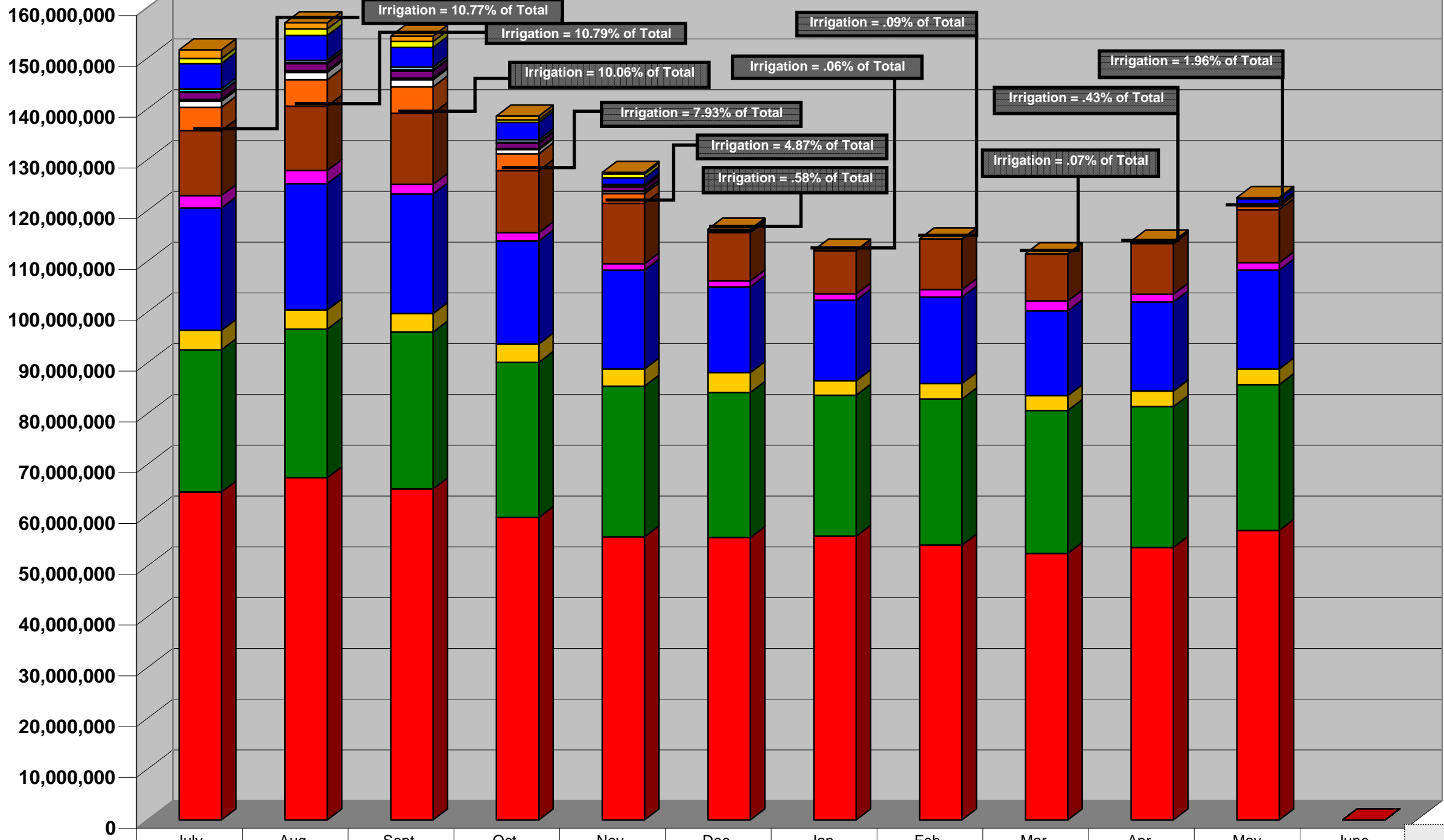
Virginia Dept. of the Treasury:		Bank of America - Trustee (continued):	
Local Government Investment Pool	<u>\$4,100,931</u>	Federal Home Loan BKS	<u>\$1,002,810</u>
Open, .890%		Call 2/17/11 @ 100	
S&P: AAAM		Due 2/17/16, 3.750%	
		Moody's: AAA S&P:AAA	
Bank of America - Trustee:			
Cash Reserves/Money Market	<u>\$147,025</u>	Federal Home Loan BKS	<u>\$2,040,000</u>
Open, .500%		Call 3/11/10 @ 100	
Moody's: Prime-1 S&P:A-1+		Due 3/11/16, 4.00%	
		Moody's: AAA S&P:AAA	
Federal Farm Credit BKS	<u>\$2,526,575</u>		
Call 6/26/09 @ 100			
Due 6/26/13, 5.950%			
Moody's: AAA S&P:AAA			
Federal Home Loan BKS	<u>\$1,030,310</u>		
Call 2/17/11 @ 100			
Due 5/14/15, 4.700%			
Moody's: AAA S&P:AAA			
		Total Investments	<u>\$10,847,651</u>

Albemarle County
Service Authority

Monthly Water Consumption

(in Gallons)

Fiscal Year 2009



	July	Aug.	Sept.	Oct.	Nov.	Dec.	Jan.	Feb.	Mar.	Apr.	May	June
Institutional - Irrigation & Auxiliary	1,729,200	1,241,000	1,076,600	757,800	303,700	1,000	0	0	7,100	73,100	56,100	0
Institutional - Irrigation through Exclusion	972,300	1,287,600	1,173,900	491,600	785,700	37,700	16,900	2,900	12,300	48,300	181,700	0
Comm. (Other) - Irrigation & Auxiliary	5,011,600	4,892,700	3,873,300	3,427,400	1,335,600	206,800	19,700	24,300	45,400	162,400	924,600	0
Comm. (Other) - Irrigation through Exclusion	595,200	440,200	504,500	495,100	257,000	0	0	0	600	3,600	82,200	0
Offices - Irrigation & Auxiliary	75,000	156,400	257,500	198,800	159,200	32,900	0	0	0	0	22,000	0
Offices - Irrigation through Exclusion	1,383,000	1,431,900	1,396,000	1,044,400	838,600	196,000	0	0	0	8,900	33,800	0
MFR - Irrigation & Auxiliary	310,400	300,400	283,600	112,900	72,800	20,000	0	0	0	900	47,300	0
MFR - Irrigation through Exclusion	57,600	8,600	22,400	108,700	19,000	2,300	900	0	1,900	4,400	22,900	0
SFR - Irrigation & Auxiliary	1,197,700	1,467,600	1,411,000	826,400	438,300	62,100	10,200	67,300	8,500	64,200	356,600	0
SFR - Irrigation through Exclusion	4,580,300	5,194,900	5,220,600	3,295,000	1,908,900	85,200	6,600	400	3,300	121,200	666,300	0
Institutional - Domestic Consumption	12,799,600	12,681,300	13,998,300	12,218,400	11,872,300	9,525,100	8,545,200	9,897,300	9,227,700	9,961,400	10,423,600	0
Industrial	2,453,800	2,585,000	1,883,500	1,651,600	1,287,200	1,195,500	1,238,100	1,518,700	1,949,300	1,517,800	1,480,900	0
Comm. (Other) - Domestic Consumption	24,115,300	24,882,100	23,547,700	20,297,100	19,453,600	16,871,900	15,871,800	16,977,000	16,706,300	17,566,500	19,468,600	0
Offices - Domestic Consumption	3,830,000	3,794,700	3,642,500	3,601,200	3,377,400	3,938,300	2,828,900	3,092,100	2,920,200	3,081,600	3,061,084	0
MFR - Domestic Consumption	27,991,800	29,236,925	30,883,950	30,556,325	29,672,450	28,548,800	27,784,375	28,750,050	28,150,050	27,712,575	28,710,808	0
SFR - Domestic Consumption	64,565,892	67,391,950	65,192,575	59,546,208	55,750,653	55,613,441	55,860,657	54,111,951	52,481,425	53,655,800	57,024,653	0

Types of Irrigation Meters:

Irrigation: Water meter dedicated to the service of an irrigation system only.

Auxiliary: Water meter dedicated to the service of an irrigation system when the property's non-irrigation needs are supplied by a primary meter.

Exclusion: Grandfathered, pre-auxiliary, customer owned water meter used to exclude sewer charges for water supplied to the irrigation system.

Albemarle County Service Authority

Number of Billed Water Connections by Class

	July	August	Sept.	Oct.	Nov.	Dec.	Jan.	Feb.	March	April	May	June
S/F Residential	14,728	14,743	14,772	14,771	14,780	14,823	14,810	14,837	14,848	14,862	14,894	0
M/F Residential ¹	8,506	8,508	8,506	8,504	8,500	8,504	8,598	8,598	8,596	8,595	8,595	0
Comm. (Offices)	361	362	363	363	363	364	364	364	365	365	365	0
Comm. (Other)	1,142	1,145	1,147	1,154	1,157	1,155	1,153	1,149	1,156	1,163	1,170	0
Industrial	21	21	21	21	21	21	21	21	21	21	21	0
Institutional	1,307	1,307	1,307	1,307	1,307	1,307	1,308	1,308	1,306	1,306	1,305	0
TOTAL	26,065	26,086	26,116	26,120	26,128	26,174	26,254	26,277	26,292	26,312	26,350	0

Average Water Usage by Class and by Connection (in gallons)

	July	August	Sept.	Oct.	Nov.	Dec.	Jan.	Feb.	March	April	May	June
S/F Residential	4,776	5,023	4,862	4,310	3,931	3,762	3,773	3,652	3,535	3,623	3,897	0
M/F Residential ¹	3,334	3,473	3,667	3,619	3,502	3,360	3,232	3,344	3,275	3,225	3,349	0
Comm. (Offices)	14,648	14,870	14,590	13,345	12,053	11,448	7,772	8,495	8,001	8,467	8,539	0
Comm. (Other)	26,026	26,389	24,347	20,988	18,190	14,787	13,783	14,797	14,492	15,247	17,500	0
Industrial	116,848	123,095	89,690	78,648	61,295	56,929	58,957	72,319	92,824	72,276	70,519	0
Institutional	11,860	11,637	12,432	10,304	9,917	7,317	6,546	7,569	7,080	7,720	8,170	0

¹ Multi-family residential *units or apartments*, not connections

Single-Family Residential Water Usage

(Including irrigation through exclusion, irrigation, and auxiliary meters)

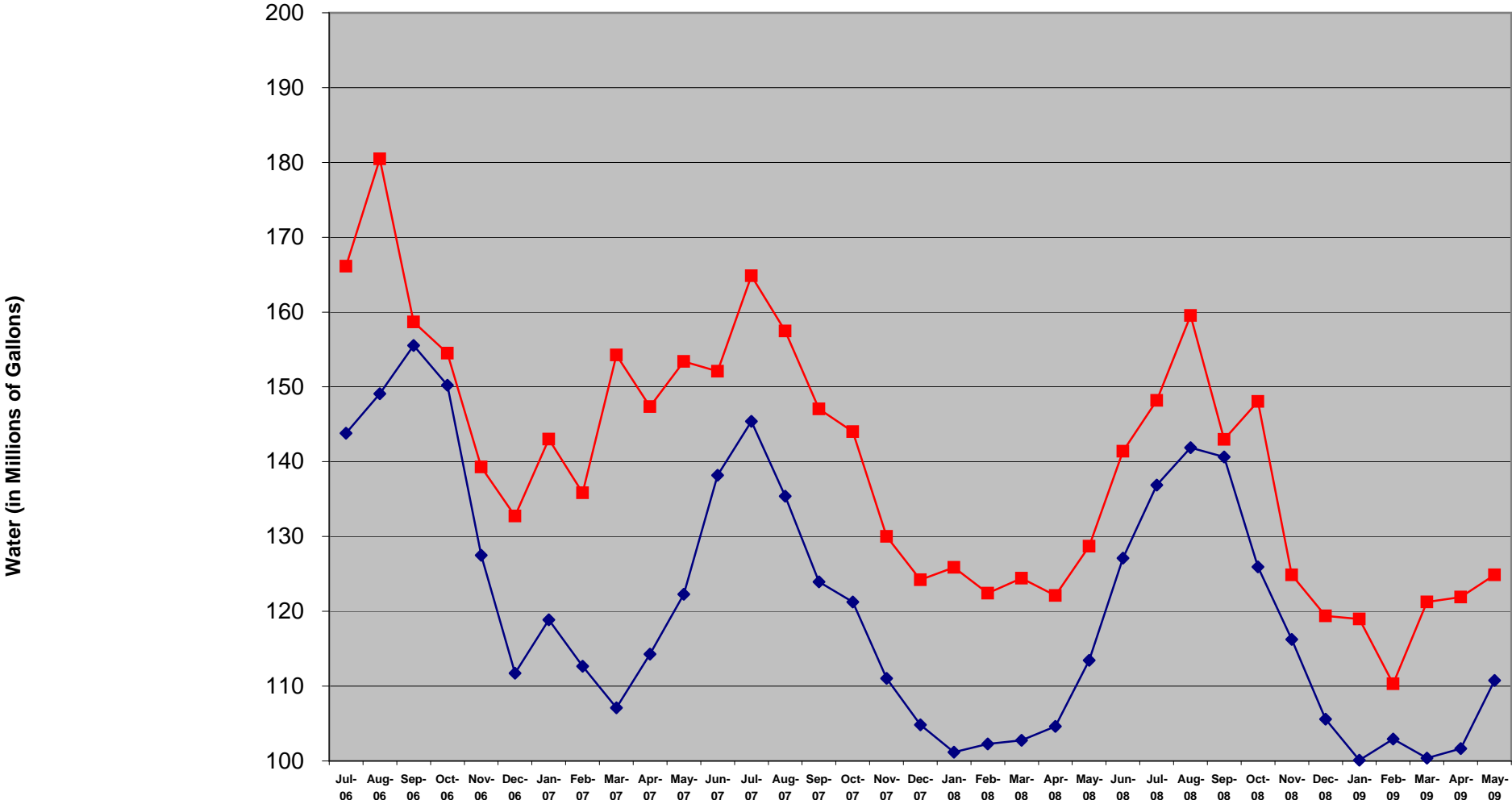
	FY 2006											
	July	August	September	October	November	December	January	February	March	April	May	June
Tier 1 (0 - 3,000 gallons)	35,337,775	33,207,700	35,206,300	35,464,700	35,269,200	34,901,650	34,592,475	34,505,825	34,444,900	35,023,500	35,698,100	36,076,200
Tier 2 (3,001 - 6,000 gallons)	19,104,300	19,174,500	17,697,025	18,490,500	16,903,100	15,385,975	15,343,350	14,589,500	14,038,975	15,639,700	17,001,975	19,372,775
Tier 3 (over 6,000 gallons)	22,335,225	22,503,600	19,115,750	23,722,050	14,470,025	8,175,700	7,735,700	6,025,200	5,258,000	6,956,100	11,457,000	19,425,300
Total	76,777,300	74,885,800	72,019,075	77,677,250	66,642,325	58,463,325	57,671,525	55,120,525	53,741,875	57,619,300	64,157,075	74,874,275

	FY 2007											
	July	August	September	October	November	December	January	February	March	April	May	June
Tier 1 (0 - 3,000 gallons)	35,985,300	35,840,896	36,386,500	36,796,325	36,295,075	35,674,500	36,393,000	35,415,200	35,073,642	35,566,550	36,161,625	36,675,075
Tier 2 (3,001 - 6,000 gallons)	18,659,025	18,168,077	19,406,075	19,749,900	17,771,100	15,707,500	18,692,700	15,876,225	14,591,600	15,368,300	17,108,900	18,744,225
Tier 3 (over 6,000 gallons)	22,330,900	22,456,576	26,083,400	17,914,000	11,309,000	6,609,650	10,192,775	9,683,500	5,447,367	7,104,500	11,390,600	18,476,400
Total	76,975,225	76,465,549	81,875,975	74,460,225	65,375,175	57,991,650	65,278,475	60,974,925	55,112,608	58,039,350	64,661,125	73,895,700

	FY 2008											
	July	August	September	October	November	December	January	February	March	April	May	June
Tier 1 (0 - 3,000 gallons)	36,481,908	35,854,450	35,951,975	36,013,425	35,432,400	35,530,200	35,591,525	35,472,925	35,486,050	35,789,300	36,248,800	36,631,700
Tier 2 (3,001 - 6,000 gallons)	18,569,800	16,229,250	15,498,600	15,381,400	13,727,400	14,005,600	14,924,600	14,110,700	14,010,100	14,170,200	15,313,800	17,142,600
Tier 3 (over 6,000 gallons)	22,542,800	16,535,700	10,190,100	7,803,200	5,838,400	5,328,800	5,588,500	5,450,200	4,672,400	5,022,000	6,878,600	13,301,100
Total	77,594,508	68,619,400	61,640,675	59,198,025	54,998,200	54,864,600	56,104,625	55,033,825	54,168,550	54,981,500	58,441,200	67,075,400

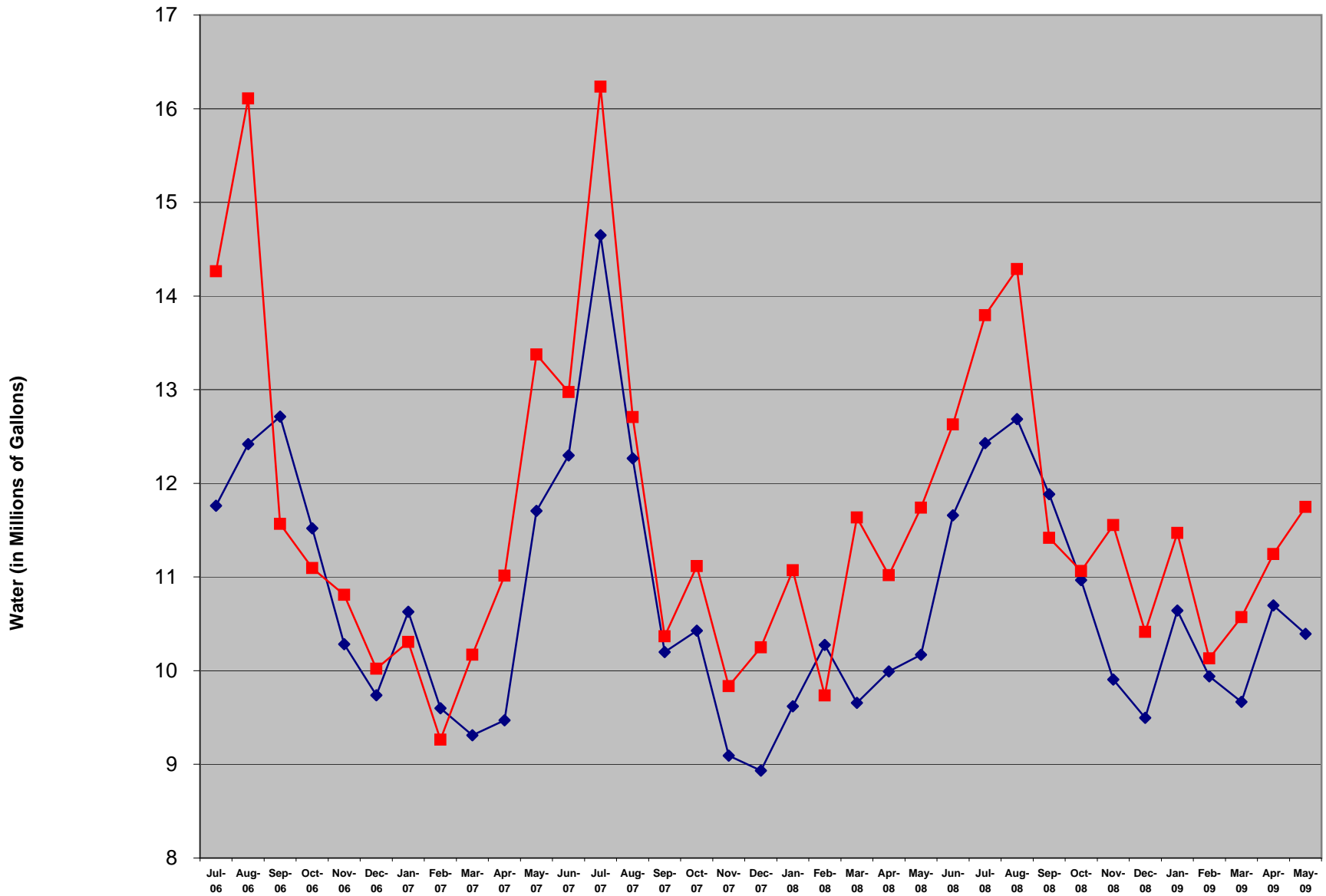
	FY 2009											
	July	August	September	October	November	December	January	February	March	April	May	June
Tier 1 (0 - 3,000 gallons)	36,373,950	36,698,300	36,784,800	36,282,308	36,032,084	36,124,875	35,850,025	35,761,317	35,609,025	36,034,200	36,679,538	
Tier 2 (3,001 - 6,000 gallons)	16,788,267	17,860,800	16,829,900	15,331,000	14,398,467	14,507,400	14,606,700	13,705,700	13,054,200	13,722,900	15,345,683	
Tier 3 (over 6,000 gallons)	17,579,975	21,362,550	18,499,575	12,221,400	7,875,900	5,234,967	5,420,732	4,712,634	3,830,000	4,084,100	6,022,331	
Total	70,742,192	75,921,650	72,114,275	63,834,708	58,306,450	55,867,242	55,877,457	54,179,651	52,493,225	53,841,200	58,047,553	0

FY 2007, 2008, and 2009 Urban Water Comparison - RWSA Flows & ACSA Billings



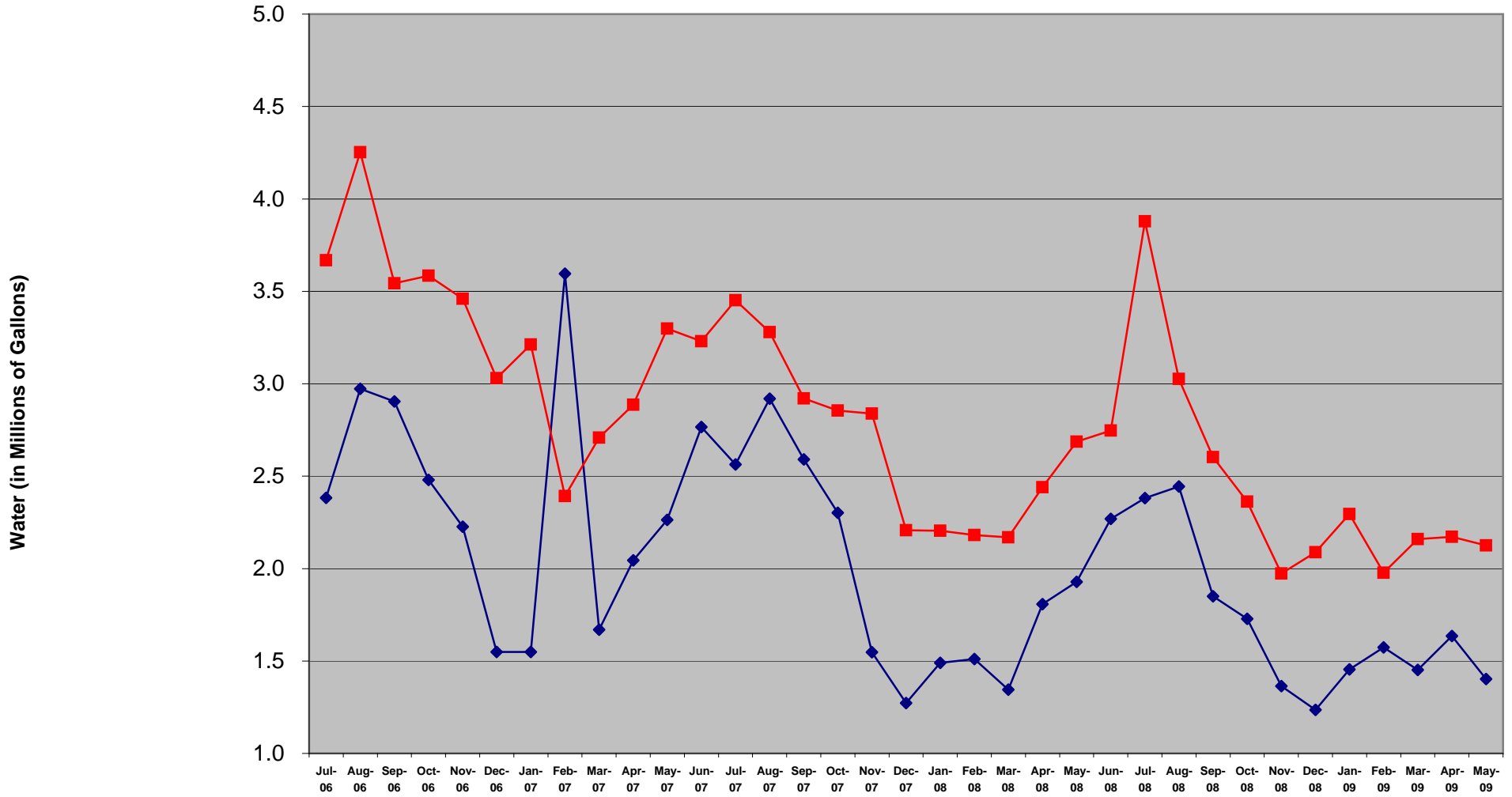
	Jul-06	Aug-06	Sep-06	Oct-06	Nov-06	Dec-06	Jan-07	Feb-07	Mar-07	Apr-07	May-07	Jun-07	Jul-07	Aug-07	Sep-07	Oct-07	Nov-07	Dec-07	Jan-08	Feb-08	Mar-08	Apr-08	May-08	Jun-08	Jul-08	Aug-08	Sep-08	Oct-08	Nov-08	Dec-08	Jan-09	Feb-09	Mar-09	Apr-09	May-09
ACSA Billed - Urban Water	144	149	156	150	127	112	119	113	107	114	122	138	145	135	124	121	111	105	101	102	103	105	113	127	137	142	141	126	116	106	100	103	100	102	111
RWSA Billed - Urban Flows	166	180	159	155	139	133	143	136	154	147	153	152	165	157	147	144	130	124	126	122	124	122	129	141	148	160	143	148	125	119	119	110	121	122	125
Variance - RWSA Treated:ACSA Billed	16%	21%	2%	3%	9%	19%	20%	21%	44%	29%	25%	10%	13%	16%	19%	19%	17%	19%	24%	20%	21%	17%	13%	11%	8%	12%	2%	18%	7%	13%	19%	7%	21%	20%	13%

FY 2007, 2008, and 2009 Crozet Water Comparison - RWSA Flows & ACSA Billings



	Jul-06	Aug-06	Sep-06	Oct-06	Nov-06	Dec-06	Jan-07	Feb-07	Mar-07	Apr-07	May-07	Jun-07	Jul-07	Aug-07	Sep-07	Oct-07	Nov-07	Dec-07	Jan-08	Feb-08	Mar-08	Apr-08	May-08	Jun-08	Jul-08	Aug-08	Sep-08	Oct-08	Nov-08	Dec-08	Jan-09	Feb-09	Mar-09	Apr-09	May-09		
◆ ACSA Billed - Crozet Water	12	12	13	12	10	10	11	10	9	9	12	12	15	12	10	10	9	9	10	10	10	10	10	10	12	12	13	12	11	10	9	11	10	10	10	11	10
■ RWSA Billed - Crozet Flows	14	16	12	11	11	10	10	9	10	11	13	13	16	13	10	11	10	10	11	10	12	11	12	13	14	14	11	11	12	10	11	10	11	11	11	12	
Variance - RWSA Treated:ACSA Billed	21%	30%	-9%	-4%	5%	3%	-3%	-3%	9%	16%	14%	5%	11%	4%	2%	7%	8%	15%	15%	-5%	20%	10%	15%	8%	11%	13%	-4%	1%	17%	10%	8%	2%	9%	5%	13%		

FY 2007, 2008 & 2009 Scottsville Water Comparison - RWSA Flows & ACSA Billings



	Jul-06	Aug-06	Sep-06	Oct-06	Nov-06	Dec-06	Jan-07	Feb-07	Mar-07	Apr-07	May-07	Jun-07	Jul-07	Aug-07	Sep-07	Oct-07	Nov-07	Dec-07	Jan-08	Feb-08	Mar-08	Apr-08	May-08	Jun-08	Jul-08	Aug-08	Sep-08	Oct-08	Nov-08	Dec-08	Jan-09	Feb-09	Mar-09	Apr-09	May-09
ACSA Billed - Scottsville Water	2.4	3.0	2.9	2.5	2.2	1.5	1.5	3.6	1.7	2.0	2.3	2.8	2.6	2.9	2.6	2.3	1.5	1.3	1.5	1.5	1	2	2	2	2.4	2.4	1.9	1.7	1.4	1.2	1.5	1.6	1.5	1.6	1.4
RWSA Billed - Scottsville Flows	3.7	4.3	3.5	3.6	3.5	3.0	3.2	2.4	2.7	2.9	3.3	3.2	3.5	3.3	2.9	2.9	2.8	2.2	2.2	2.2	2	2	3	3	3.9	3.0	2.6	2.4	2.0	2.1	2.3	2.0	2.2	2.2	2.1
Variance - RWSA Treated:ACSA Billed	54%	43%	22%	45%	55%	96%	107%	-33%	62%	41%	46%	17%	35%	12%	13%	24%	83%	73%	48%	44%	61%	35%	39%	21%	63%	24%	41%	37%	45%	69%	58%	26%	49%	33%	51%

Albemarle County Service Authority
 Complete Check Register
 Current File, 05/01/09 to 05/15/09
 All Accounts, Sessions 000000 to 002922

Date: Payment / Vendor Information	Check	Ck Date	Prity	Invoice	Session	Reference	Amount
Checking Account:	100-100-020						
GOLDSG / Gold's Gym	28012	5/15/2009	1	PAYT051309	002921	THOMAS	77.98
GOLDSG Subtotal :							77.98
TAXATI / Dept. of Taxation	28013	5/15/2009	1	PAYT051309	002921		411.60
TAXATI Subtotal :							411.60
TREAS4 / Treasurer of Virginia	28014	5/15/2009	1	PAYT051309	002921		873.32
TREAS4 Subtotal :							873.32
UVACU / UVA Credit Union	28015	5/15/2009	1	PAYT051309	002921		228.43
UVACU Subtotal :							228.43
Total For Check Account:				100-100-020			1591.33
Checking Account:	201-200-084						
/ ** ALIGNMENT **	35749	5/15/2009	S	ALIGNMENT		ALIGNMENT	0.00
Subtotal :							0.00
4IMPRI / 4imprint, Inc.	35750	5/15/2009	1	1493856	002922		722.18
4IMPRI Subtotal :							722.18
ABSOLU / Absolute Plumbing &	35751	5/15/2009	1	7763	002922		300.00
ABSOLU Subtotal :							300.00
ACSA / Albemarle County Service Authorit	35752	5/15/2009	1	PAYT051309	002922	PETTY CASH	147.48
ACSA Subtotal :							147.48
ADAMS / Mary Adams	35753	5/15/2009	1	PAYT050609	002922	RAIN BARRE	60.00
ADAMS Subtotal :							60.00
ADVANO / Advantage Office Systems	35754	5/15/2009	1	25525	002922		211.29
ADVANO Subtotal :							211.29
AGDILL / A. G. Dillard, Inc.	35755	5/15/2009	1	BOARSH#2	002922	SPO#7808	47276.75

Albemarle County Service Authority
 Complete Check Register
 Current File, 05/01/09 to 05/15/09
 All Accounts, Sessions 000000 to 002922

Date: Payment / Vendor Information	Check	Ck Date	Prity	Invoice	Session	Reference	Amount
AGDILL Subtotal :							47276.75
AMACKE / Sheila S. Amacker	35756	5/15/2009	1	PAYT050109	002922	TOILET REB	300.00
AMACKE Subtotal :							300.00
ATLANT / Atlantic Machinery, Inc.	35757	5/15/2009	1	51226	002922	PO#7747	166953.00
ATLANT Subtotal :							166953.00
BANK / Bank of America	35758	5/15/2009	1	APRIL09	002922	CORP. ACCT	5498.85
BANK Subtotal :							5498.85
BASSIG / Judi & Tony Bassignani	35759	5/15/2009	1	PAYT051109	002922	RAIN BARRE	30.00
BASSIG Subtotal :							30.00
BHRUNY / B. H. Runyon Co.	35760	5/15/2009	1	295569	002922		311.50
BHRUNY Subtotal :							311.50
BLUE / Blue Ridge Builders Supply	35761	5/15/2009	1	APRIL09	002922	A-1009-CON	14.00
BLUE Subtotal :							14.00
Employee	35762	5/15/2009	1	CAFE051109	002922	MED. REIMB	88.16
Subtotal :							88.16
BROOKS / Althea Brooks	35763	5/15/2009	1	PAYT050709	002922	TOILET REB	100.00
BROOKS Subtotal :							100.00
CASTRO / Jason Castro	35764	5/15/2009	1	REISSU1008	002922	TOILET REB	100.00
CASTRO Subtotal :							100.00
CHARL4 / Charlottesville Truck Repair, Inc	35765	5/15/2009	1	058575	002922		16.00
CHARL4 / Charlottesville Truck Repair, Inc	35765	5/15/2009	1	058672	002922		42.60
CHARL4 Subtotal :							58.60
CITY1 / City of Charlottesville	35766	5/15/2009	1	AMBROS0509	002922	A-1045904	10.00
CITY1 / City of Charlottesville	35766	5/15/2009	1	AVON0509	002922	A-1048121	10.00
CITY1 Subtotal :							20.00

Albemarle County Service Authority
 Complete Check Register
 Current File, 05/01/09 to 05/15/09
 All Accounts, Sessions 000000 to 002922

Date: Payment / Vendor Information	Check	Ck Date	Prity	Invoice	Session	Reference	Amount
CLEMEN / Janice Clements	35767	5/15/2009	1	PAYT050109	002922	TOILET REB	100.00
CLEMEN Subtotal :							100.00
COMMO4 / Commonwealth Excavating, Inc.	35768	5/15/2009	1	RAGGED#1	002922	SPO#7824	29814.80
COMMO4 Subtotal :							29814.80
CONSO1 / Consolidated Pipe & Supply Co.,In	35769	5/15/2009	1	2390488	002922		666.18
CONSO1 / Consolidated Pipe & Supply Co.,In	35769	5/15/2009	1	2390536	002922		101.40
CONSO1 Subtotal :							767.58
CRAIGP / Peter Craig	35770	5/15/2009	1	PAYT042709	002922	TOILET REB	200.00
CRAIGP Subtotal :							200.00
CUMMIN / Cummins Atlantic, Inc.	35771	5/15/2009	1	008-65953	002922	PO#7797	1190.13
CUMMIN Subtotal :							1190.13
DANIEL / Daniel's	35772	5/15/2009	1	15480	002922		662.51
DANIEL Subtotal :							662.51
DOMIN3 / Dominion Virginia Power	35773	5/15/2009	1	BLDGAPR09	002922	9995400000	2443.38
DOMIN3 / Dominion Virginia Power	35773	5/15/2009	1	RT810MAY09	002922	2396032506	47.76
DOMIN3 / Dominion Virginia Power	35773	5/15/2009	1	SANDJUN09	002922	9115297500	90.92
DOMIN3 / Dominion Virginia Power	35773	5/15/2009	1	TREMMAY09	002922	5925565003	880.16
DOMIN3 / Dominion Virginia Power	35773	5/15/2009	1	WHSEMAY09	002922	0005480009	494.07
DOMIN3 Subtotal :							3956.29
EARTHV / Earth Vector Systems, LLC	35774	5/15/2009	1	5040911	002922	PO#7806	4160.60
EARTHV Subtotal :							4160.60
ENVIR2 / Environmental Investigations, Inc	35775	5/15/2009	1	PAYT050109	002922	REGISTER	750.00
ENVIR2 Subtotal :							750.00

Albemarle County Service Authority
 Complete Check Register
 Current File, 05/01/09 to 05/15/09
 All Accounts, Sessions 000000 to 002922

Date:

Payment / Vendor

Information	Check	Ck Date	Prity	Invoice	Session	Reference	Amount
EPPELE / Timothy Eppele	35776	5/15/2009	1	PAYT050509	002922	RAIN BARRE	60.00
EPPELE Subtotal :							60.00
FERGUS / Ferguson Enterprises, Inc.	35777	5/15/2009	1	1609392	002922		49.13
FERGUS / Ferguson Enterprises, Inc.	35777	5/15/2009	1	1612933	002922		13.08
FERGUS / Ferguson Enterprises, Inc.	35777	5/15/2009	1	1613260	002922		47.02
FERGUS / Ferguson Enterprises, Inc.	35777	5/15/2009	1	1613829	002922		28.15
FERGUS / Ferguson Enterprises, Inc.	35777	5/15/2009	1	1614071	002922		86.20
FERGUS / Ferguson Enterprises, Inc.	35777	5/15/2009	1	1614650	002922		11.13
FERGUS / Ferguson Enterprises, Inc.	35777	5/15/2009	1	1614728	002922		33.38
FERGUS Subtotal :							268.09
FISHER / Fisher Auto Parts, Inc.	35778	5/15/2009	1	APRIL09	002922	A-10280	223.83
FISHER Subtotal :							223.83
FJESET / Lance & Jenny Fjeseth	35779	5/15/2009	1	PAYT050809	002922	TOILET REB	100.00
FJESET Subtotal :							100.00
FOSTE2 / Foster's Pest Control, Inc.	35780	5/15/2009	1	26794	002922		65.00
FOSTE2 Subtotal :							65.00
Employee	35781	5/15/2009	1	CAFE051309	002922	MED. REIMB	40.00
Employee	35781	5/15/2009	1	PAYT051209	002922	TUITION	414.40
Subtotal :							454.40
FOXSYS / Susan Fox	35782	5/15/2009	1	PAYT042809	002922	RAIN BARRE	30.00
FOXSYS Subtotal :							30.00
GANIAT / Ron Ganiats	35783	5/15/2009	1	PAYT050609	002922	RAIN BARRE	60.00
GANIAT Subtotal :							60.00
GENUIN / Genuine Parts Company - Richmond	35784	5/15/2009	1	APRIL09	002922	A-29600438	392.31
GENUIN Subtotal :							392.31

Albemarle County Service Authority
 Complete Check Register
 Current File, 05/01/09 to 05/15/09
 All Accounts, Sessions 000000 to 002922

Date: Payment / Vendor Information	Check	Ck Date	Prity	Invoice	Session	Reference	Amount
HADDEN / Charles Hadden	35785	5/15/2009	1	PAYT050709	002922	TOILET REB	100.00
HADDEN Subtotal :							100.00
HDSUPP / HD Supply Waterworks, Ltd.	35786	5/15/2009	1	8724551	002922		857.64
HDSUPP / HD Supply Waterworks, Ltd.	35786	5/15/2009	1	8824125	002922		394.50
HDSUPP / HD Supply Waterworks, Ltd.	35786	5/15/2009	1	8837662	002922	PO#7816	19308.00
HDSUPP / HD Supply Waterworks, Ltd.	35786	5/15/2009	1	8846542	002922	PO#7816	1063.00
HDSUPP / HD Supply Waterworks, Ltd.	35786	5/15/2009	1	8869862	002922	PO#7816	3601.80
HDSUPP Subtotal :							25224.94
HELMR / Roseanna Helm	35787	5/15/2009	1	PAYT042709	002922	TOILET REB	100.00
HELMR Subtotal :							100.00
HENLEY / Thomas W. Henley, Jr.	35788	5/15/2009	1	REISSU0808	002922	TRAVEL EXP	13.36
HENLEY Subtotal :							13.36
HUFFMA / John Huffman	35789	5/15/2009	1	PAYT042709	002922	TOILET REB	100.00
HUFFMA Subtotal :							100.00
INDIAN / Indian River Equipment	35790	5/15/2009	1	P3662	002922		281.12
INDIAN Subtotal :							281.12
JAMES / James River Solutions	35791	5/15/2009	1	300075	002922		409.14
JAMES / James River Solutions	35791	5/15/2009	1	300079	002922		624.57
JAMES Subtotal :							1033.71
KASTR / Rick Kast	35792	5/15/2009	1	PAYT050609	002922	REIMBURSEM	125.90
KASTR Subtotal :							125.90
KAUFFM / John Kauffman	35793	5/15/2009	1	PAYT042909	002922	TOILET REB	100.00
KAUFFM Subtotal :							100.00
LOWES / Lowe's Companies, Inc.	35794	5/15/2009	1	APRIL09	002922	9900033064	783.47

Albemarle County Service Authority
 Complete Check Register
 Current File, 05/01/09 to 05/15/09
 All Accounts, Sessions 000000 to 002922

Date: Payment / Vendor Information	Check	Ck Date	Prity	Invoice	Session	Reference	Amount
						LOWES Subtotal :	783.47
LUCKST / Luck Stone Corporation	35795	5/15/2009	1	890730	002922		268.12
LUCKST / Luck Stone Corporation	35795	5/15/2009	1	890763	002922		104.87
						LUCKST Subtotal :	372.99
LWMELT / L. W. Melton	35796	5/15/2009	1	INV050809	002922		120.00
						LWMELT Subtotal :	120.00
MAILIN / Mailing Services of Virginia	35797	5/15/2009	1	0904169	002922		403.70
MAILIN / Mailing Services of Virginia	35797	5/15/2009	1	0904208	002922		384.34
MAILIN / Mailing Services of Virginia	35797	5/15/2009	1	0905037	002922		289.20
						MAILIN Subtotal :	1077.24
MARTI3 / Martin Marietta Materials	35798	5/15/2009	1	7629989	002922		71.04
MARTI3 / Martin Marietta Materials	35798	5/15/2009	1	7650606	002922		83.82
						MARTI3 Subtotal :	154.86
MATTSO / Hakon Mattson	35799	5/15/2009	1	PAYT050409	002922	RAIN BARRE	60.00
						MATTSO Subtotal :	60.00
MILLEL / Laura Martof Miller	35800	5/15/2009	1	PAYT050609	002922	TOILET REB	100.00
						MILLEL Subtotal :	100.00
MILLER / Miller's Office Products	35801	5/15/2009	1	139686	002922		253.56
MILLER / Miller's Office Products	35801	5/15/2009	1	142502	002922		16.82
						MILLER Subtotal :	270.38
MOJE / Robert Moje	35802	5/15/2009	1	PAYT050709	002922	TOILET REB	300.00
						MOJE Subtotal :	300.00
MONROE / Jeffrey Monroe	35803	5/15/2009	1	PAYT042909	002922	RAIN BARRE	30.00
						MONROE Subtotal :	30.00

Albemarle County Service Authority
 Complete Check Register
 Current File, 05/01/09 to 05/15/09
 All Accounts, Sessions 000000 to 002922

Date: Payment / Vendor Information	Check	Ck Date	Prity	Invoice	Session	Reference	Amount
MUNICI / Municipal & Financial	35804	5/15/2009	1	09-046	002922	PO#7768	15177.00
MUNICI / Municipal & Financial	35804	5/15/2009	1	09-068	002922	PO#7768	3504.00
MUNICI Subtotal :							18681.00
Employee	35805	5/15/2009	1	CAFE043009	002922	MED. REIMB	20.00
Employee	35805	5/15/2009	1	PAYT051109	002922	REIMBURSEM	296.80
Subtotal :							316.80
OBRIE1 / O'Brien & Gere Engineers, Inc.	35806	5/15/2009	1	1105273	002922	PO#7821	10785.40
OBRIE1 / O'Brien & Gere Engineers, Inc.	35806	5/15/2009	1	1105276	002922	SPO#7755	11554.95
OBRIE1 / O'Brien & Gere Engineers, Inc.	35806	5/15/2009	1	1105278	002922	SPO#7654	3565.00
OBRIE1 Subtotal :							25905.35
PACKNM / Pack 'N' Mail	35807	5/15/2009	1	APRIL09	002922	ACCOUNT1	24.60
PACKNM Subtotal :							24.60
PARHAM / Parham Construction Company	35808	5/15/2009	1	20044926	002922		420.00
PARHAM Subtotal :							420.00
PAULET / W. F. Paulett & Son, Inc.	35809	5/15/2009	1	62980/1	002922		32.99
PAULET / W. F. Paulett & Son, Inc.	35809	5/15/2009	1	63070/1	002922		9.38
PAULET / W. F. Paulett & Son, Inc.	35809	5/15/2009	1	63074/1	002922		17.91
PAULET / W. F. Paulett & Son, Inc.	35809	5/15/2009	1	63081/1	002922		4.49
PAULET Subtotal :							64.77
PENNZ / Pennz-10	35810	5/15/2009	1	APRIL09	002922	ON ACCOUNT	29.69
PENNZ Subtotal :							29.69
PERRYJ / Jeffrey Perry	35811	5/15/2009	1	PAYT042709	002922	TOILET REB	100.00
PERRYJ Subtotal :							100.00
PERSON / Jonathan Persons	35812	5/15/2009	1	PAYT050709	002922	TOILET REB	100.00
PERSON Subtotal :							100.00

Albemarle County Service Authority
 Complete Check Register
 Current File, 05/01/09 to 05/15/09
 All Accounts, Sessions 000000 to 002922

Date: Payment / Vendor Information	Check	Ck Date	Prity	Invoice	Session	Reference	Amount
PILLAR / David Pillar	35813	5/15/2009	1	PAYT050809	002922	TOILET REB	100.00
PILLAR Subtotal :							100.00
PLPOWE / P & L Power Equipment	35814	5/15/2009	1	13765	002922		51.75
PLPOWE Subtotal :							51.75
POLLAG / Gregory Pollard	35815	5/15/2009	1	PAYT050409	002922	RAIN BARRE	60.00
POLLAG Subtotal :							60.00
PRICE / Jim Price Chevrolet	35816	5/15/2009	1	6006365/1	002922		249.68
PRICE Subtotal :							249.68
PROGR2 / Progressive Business Publications	35817	5/15/2009	1	CFO09-10	002922	495229303	299.00
PROGR2 Subtotal :							299.00
REYNOL / John & Barbara Reynolds	35818	5/15/2009	1	PAYT050409	002922	RAIN BARRE	60.00
REYNOL Subtotal :							60.00
RHDONN / Dex	35819	5/15/2009	1	APRIL09	002922	300118889	51.00
RHDONN Subtotal :							51.00
RICHM3 / Richmond Machinery	35820	5/15/2009	1	R67402	002922	PO#7774	11994.00
RICHM3 Subtotal :							11994.00
RIVAN2 / Rivanna Water & Sewer Authority	35821	5/15/2009	1	07016	002922		2045.50
RIVAN2 Subtotal :							2045.50
SAFET1 / Safety Consultants of Virginia, I	35822	5/15/2009	1	2226	002922		287.50
SAFET1 Subtotal :							287.50
SAFEWA / Safeware, Inc.	35823	5/15/2009	1	3129827	002922	PO#7807	1998.00
SAFEWA Subtotal :							1998.00
SAVITT / Steven J. Savitt	35824	5/15/2009	1	PAYT050109	002922	TOILET REB	100.00

Albemarle County Service Authority
 Complete Check Register
 Current File, 05/01/09 to 05/15/09
 All Accounts, Sessions 000000 to 002922

Date: Payment / Vendor Information	Check	Ck Date	Prity	Invoice	Session	Reference	Amount
SAVITT Subtotal :							100.00
SNIADE / Karen Sniadecki	35825	5/15/2009	1	PAYT042909	002922	RAIN BARRE	60.00
SNIADE Subtotal :							60.00
SPECIA / Specialty Fasteners of Ch'ville	35826	5/15/2009	1	139808	002922		210.48
SPECIA / Specialty Fasteners of Ch'ville	35826	5/15/2009	1	139860	002922		84.94
SPECIA / Specialty Fasteners of Ch'ville	35826	5/15/2009	1	139881	002922		325.00
SPECIA / Specialty Fasteners of Ch'ville	35826	5/15/2009	1	139944	002922		14.00
SPECIA / Specialty Fasteners of Ch'ville	35826	5/15/2009	1	139957	002922		9.36
SPECIA Subtotal :							643.78
SPRINT / Embarq	35827	5/15/2009	1	CROZET0509	002922	4348234346	34.64
SPRINT / Embarq	35827	5/15/2009	1	GEORG0509	002922	4349731782	38.86
SPRINT / Embarq	35827	5/15/2009	1	MILLC0509	002922	4342932554	40.22
SPRINT / Embarq	35827	5/15/2009	1	RHILL0409	002922	4342952557	46.97
SPRINT Subtotal :							160.69
Employee	35828	5/15/2009	1	CAFE051109	002922	MED. REIMB	5.00
Subtotal :							5.00
STJOHN / St John Bowling & Lawrence LLP	35829	5/15/2009	1	10918	002922	PO#7820	2482.50
STJOHN Subtotal :							2482.50
SUPERS / Super Shoe Stores, Inc.	35830	5/15/2009	1	0032683	002922		109.99
SUPERS Subtotal :							109.99
SUPPLY / The Supply Room Companies, Inc.	35831	5/15/2009	1	1234529-0	002922		98.26
SUPPLY / The Supply Room Companies, Inc.	35831	5/15/2009	1	1234587-0	002922		122.43
SUPPLY Subtotal :							220.69
TELEPH / Telephone Services Unlimited, Inc	35832	5/15/2009	1	47080	002922		160.00
TELEPH / Telephone Services Unlimited, Inc	35832	5/15/2009	1	47094	002922		80.00
TELEPH Subtotal :							240.00

Albemarle County Service Authority
 Complete Check Register
 Current File, 05/01/09 to 05/15/09
 All Accounts, Sessions 000000 to 002922

Date: Payment / Vendor Information	Check	Ck Date	Prity	Invoice	Session	Reference	Amount
TRACTO / Tractor Supply	35833	5/15/2009	1	APRIL09	002922	ON ACCOUNT	176.84
TRACTO Subtotal :							176.84
TREA11 / Treasurer of Virginia	35834	5/15/2009	1	PAYT050109	002922	VSMP PERMI	300.00
TREA11 Subtotal :							300.00
UNIFIR / UniFirst Corporation	35835	5/15/2009	1	2020561327	002922		431.99
UNIFIR / UniFirst Corporation	35835	5/15/2009	1	2020562138	002922		420.57
UNIFIR Subtotal :							852.56
UNITE2 / United Rentals, Inc.	35836	5/15/2009	1	81001516-1	002922		9.09
UNITE2 / United Rentals, Inc.	35836	5/15/2009	1	81018193-1	002922	PO#7800	19540.00
UNITE2 / United Rentals, Inc.	35836	5/15/2009	1	81019497-1	002922	PO#7802	759.00
UNITE2 / United Rentals, Inc.	35836	5/15/2009	1	81021624-1	002922	PO#7802	3260.00
UNITE2 Subtotal :							23568.09
UNIVAR / Univar USA, Inc.	35837	5/15/2009	1	RI-572186	002922		496.50
UNIVAR Subtotal :							496.50
USPOST / U. S. Postmaster	35838	5/15/2009	1	PAYT042809	002922	PERMIT 205	9000.00
USPOST / U. S. Postmaster	35838	5/15/2009	1	RENEW09-10	002922	RENEW 205	180.00
USPOST Subtotal :							9180.00
USPS / U.S. Postal Service	35839	5/15/2009	1	PAYT042809	002922	A-38311585	1000.00
USPS Subtotal :							1000.00
VAELEC / Virginia Electronic Components, I	35840	5/15/2009	1	1233560-02	002922		212.69
VAELEC Subtotal :							212.69
VAELEV / Virginia Elevator Co., Inc.	35841	5/15/2009	1	217700	002922		93.00
VAELEV Subtotal :							93.00
VAEMPL / Virginia Employment Commission	35842	5/15/2009	1	1STQ033109	002922	1977806	231.10
VAEMPL Subtotal :							231.10

Albemarle County Service Authority
 Complete Check Register
 Current File, 05/01/09 to 05/15/09
 All Accounts, Sessions 000000 to 002922

Date:

Payment / Vendor

Information	Check	Ck Date	Prity	Invoice	Session	Reference	Amount
VARURA / Virginia Rural Water Assoc.	35843	5/15/2009	1	INV022309	002922	PO#7779	3250.00
VARURA Subtotal :							3250.00
VATRAC / Virginia Tractor	35844	5/15/2009	1	2026497	002922		25.24
VATRAC / Virginia Tractor	35844	5/15/2009	1	2026608	002922		347.83
VATRAC / Virginia Tractor	35844	5/15/2009	1	2026774	002922		64.00
VATRAC / Virginia Tractor	35844	5/15/2009	1	2026931	002922		68.50
VATRAC Subtotal :							505.57
WARNER / Richard & Judith Warner	35845	5/15/2009	1	PAYT050609	002922	RAIN BARRE	60.00
WARNER Subtotal :							60.00
WHITET / White Tire, Inc.	35846	5/15/2009	1	132370	002922		84.75
WHITET Subtotal :							84.75
WHITMA / Whitman, Requardt & Associates, L	35847	5/15/2009	1	18-46436	002922	SPO#7652	4862.92
WHITMA / Whitman, Requardt & Associates, L	35847	5/15/2009	1	5-46466001	002922	SPO#7781	16719.95
WHITMA Subtotal :							21582.87
WIELAN / Erica Wieland	35848	5/15/2009	1	PAYT050109	002922	RAIN BARRE	60.00
WIELAN Subtotal :							60.00
WILSO3 / Michael Wilson	35849	5/15/2009	1	PAYT051109	002922	TOILET REB	100.00
WILSO3 Subtotal :							100.00
WORLDV / WorldView Solutions, Inc.	35850	5/15/2009	1	10584	002922	PO#7780	2560.00
WORLDV Subtotal :							2560.00
Employee	35851	5/15/2009	1	CAFE050609	002922	MED. RIEMB	75.00
Subtotal :							75.00
Total For Check Account:				201-200-084			427045.58
Check Register Total :							428636.91
RIVAN2/Rivanna Water & Sewer Authority		5/10/2009		Bulk Water & Sewer Transfer			840834.72
Check Register & Wire Total:							1269471.63

Albemarle County Service Authority
 Complete Check Register
 Current File, 05/16/09 to 05/29/09
 All Accounts, Sessions 000000 to 002938

Date: Payment / Vendor Information	Check	Ck Date	Prity	Invoice	Session	Reference	Amount
Checking Account:	100-100-018						
SABOL / Melissa Sabol	35852	5/19/2009	M	PAYT051809	002937	PICNIC	72.56
SABOL Subtotal :							72.56
THELIN / The Lincoln National Life Insuran	35935	5/29/2009	M	STLT0609	002938	JUNE 2009	252.08
THELIN Subtotal :							252.08
Total For Check Account:				100-100-018			324.64
Checking Account:	100-100-020						
ACAC / ACAC	28099	5/29/2009	1	PAYT052709	002934	RESP117	238.00
ACAC Subtotal :							238.00
COUNT1 / County of Albemarle	28100	5/29/2009	1	DPRE052909	002934	DENTAL PRE	469.00
COUNT1 / County of Albemarle	28100	5/29/2009	1	HPRE052909	002934	HEALTH PRE	1011.80
COUNT1 Subtotal :							1480.80
HBESKI / Herbert L. Beskin, Trustee	28101	5/29/2009	1	PAYT052709	002934		1051.00
HBESKI Subtotal :							1051.00
MINNES / Minnesota Life Insurance Company	28102	5/29/2009	1	PAYT052709	002934	LIFE INS.	62.16
MINNES Subtotal :							62.16
TAXATI / Dept. of Taxation	28103	5/29/2009	1	PAYT052709	002934		538.00
TAXATI Subtotal :							538.00
TREAS4 / Treasurer of Virginia	28104	5/29/2009	1	PAYT052709	002934		873.32
TREAS4 Subtotal :							873.32
UVACU / UVA Credit Union	28105	5/29/2009	1	PAYT052709	002934		228.43
UVACU Subtotal :							228.43
THELIN / The Lincoln National Life Insuran	28107	5/29/2009	M	LTST0609	002938	JUNE 2009	345.32

Albemarle County Service Authority
 Complete Check Register
 Current File, 05/16/09 to 05/29/09
 All Accounts, Sessions 000000 to 002938

Date: Payment / Vendor Information	Check	Ck Date	Prity	Invoice	Session	Reference	Amount
THELIN Subtotal :							345.32
Total For Check Account:				100-100-020			4817.03
Checking Account:	201-200-084						
/ ** ALIGNMENT **	35853	5/29/2009	S	ALIGNMENT		ALIGNMENT	0.00
Subtotal :							0.00
ADVAN1 / Advance Auto Parts	35854	5/29/2009	1	APRIL09	002935	ON ACCOUNT	378.62
ADVAN1 Subtotal :							378.62
ADVAN4 / Advance Safety Equipment Co.	35855	5/29/2009	1	13836	002935		42.98
ADVAN4 Subtotal :							42.98
ADVANO / Advantage Office Systems	35856	5/29/2009	1	25599	002935		341.66
ADVANO / Advantage Office Systems	35856	5/29/2009	1	25639	002935		162.99
ADVANO Subtotal :							504.65
ALLTEL / Alltel	35857	5/29/2009	1	MAY09	002935	7301839986	1030.68
ALLTEL Subtotal :							1030.68
AMERIS / AmeriSci Richmond	35858	5/29/2009	1	109041841	002935		27.50
AMERIS Subtotal :							27.50
APPALA / Appalachian Power	35859	5/29/2009	1	RT7950409	002935	0229422570	31.89
APPALA Subtotal :							31.89
AQUA / Aqua Air Laboratories, Inc.	35860	5/29/2009	1	Z90339	002935		140.00
AQUA Subtotal :							140.00
ATT / AT & T	35861	5/29/2009	1	MAY09	002935	4349774511	349.01
ATT Subtotal :							349.01
BALTIM / Baltimore Orioles	35862	5/29/2009	1	REQ052109	002935	PO#7840	1306.00
BALTIM Subtotal :							1306.00

Albemarle County Service Authority
 Complete Check Register
 Current File, 05/16/09 to 05/29/09
 All Accounts, Sessions 000000 to 002938

Date: Payment / Vendor Information	Check	Ck Date	Prity	Invoice	Session	Reference	Amount
Employee	35863	5/29/2009	1	CAFE051809	002935	MED. REIMB	45.95
						Subtotal :	45.95
BFI / Allied Waste Services	35864	5/29/2009	1	000359973	002935	A-2010536	124.62
						BFI Subtotal :	124.62
BHRUNY / B. H. Runyon Co.	35865	5/29/2009	1	295863	002935		579.50
BHRUNY / B. H. Runyon Co.	35865	5/29/2009	1	295864	002935		101.25
						BHRUNY Subtotal :	680.75
BLAW / B Law & Associates	35866	5/29/2009	1	PAYT052009	002935	TRAINING	750.00
						BLAW Subtotal :	750.00
BOBS / Bob's Wheel Alignment, Inc.	35867	5/29/2009	1	20142	002935		16.00
						BOBS Subtotal :	16.00
BREEDE / Lisa L. Breeden	35868	5/29/2009	1	PAYT022009	002935	TRAVEL ADV	235.00
						BREEDE Subtotal :	235.00
CAPITA / Capital Lighting & Supply	35869	5/29/2009	1	S4963149-1	002935		15.08
						CAPITA Subtotal :	15.08
CHARL4 / Charlottesville Truck Repair, Inc	35870	5/29/2009	1	058783	002935		16.00
						CHARL4 Subtotal :	16.00
CITY1 / City of Charlottesville	35871	5/29/2009	1	RT2500509	002935	A-1023050	10.00
CITY1 / City of Charlottesville	35871	5/29/2009	1	SHOP0609	002935	A-1020814	64.20
						CITY1 Subtotal :	74.20
CLEARC / Clear Communication &	35872	5/29/2009	1	C20389	002935		923.98
						CLEARC Subtotal :	923.98
COMMUN / First Rate Customer Service	35873	5/29/2009	1	7927720-R6	002935		119.00
						COMMUN Subtotal :	119.00

Albemarle County Service Authority
 Complete Check Register
 Current File, 05/16/09 to 05/29/09
 All Accounts, Sessions 000000 to 002938

Date: Payment / Vendor Information	Check	Ck Date	Prity	Invoice	Session	Reference	Amount
CONSO1 / Consolidated Pipe & Supply Co.,In	35874	5/29/2009	1	2390535	002935		106.40
CONSO1 / Consolidated Pipe & Supply Co.,In	35874	5/29/2009	1	2390535-1	002935		320.00
CONSO1 Subtotal :							426.40
COSNE1 / Cosner Brothers Body Shop, Inc.	35875	5/29/2009	1	INV050809	002935	PO#7827	6208.30
COSNE1 Subtotal :							6208.30
COUNT1 / County of Albemarle	35876	5/29/2009	1	052909DPRE	002935	DENTAL PRE	2012.00
COUNT1 / County of Albemarle	35876	5/29/2009	1	052909HPRE	002935	HEALTH PRE	5460.00
COUNT1 / County of Albemarle	35876	5/29/2009	1	HOSP052909	002935	HOSPITALIZ	41095.00
COUNT1 Subtotal :							48567.00
COUNT2 / County of Albemarle	35877	5/29/2009	1	29001075	002935		224.94
COUNT2 / County of Albemarle	35877	5/29/2009	1	29001076	002935		20.00
COUNT2 Subtotal :							244.94
DAILY / The Daily Progress	35878	5/29/2009	1	APRIL09	002935	A-3309559	861.57
DAILY Subtotal :							861.57
DOMIN3 / Dominion Virginia Power	35879	5/29/2009	1	BARRJUN09	002935	3816467504	2261.28
DOMIN3 / Dominion Virginia Power	35879	5/29/2009	1	CSHOPAPR09	002935	4589780156	59.21
DOMIN3 / Dominion Virginia Power	35879	5/29/2009	1	FAULCMAY09	002935	9722152502	10.00
DOMIN3 / Dominion Virginia Power	35879	5/29/2009	1	GEORGMAY09	002935	9694377509	177.39
DOMIN3 / Dominion Virginia Power	35879	5/29/2009	1	LEGO2JUN09	002935	0893976829	38.53
DOMIN3 / Dominion Virginia Power	35879	5/29/2009	1	OAKFJUN09	002935	3694115001	28.85
DOMIN3 / Dominion Virginia Power	35879	5/29/2009	1	OLDFJUN09	002935	9634630009	165.04
DOMIN3 / Dominion Virginia Power	35879	5/29/2009	1	OLDLMAY09	002935	1450713233	175.74
DOMIN3 / Dominion Virginia Power	35879	5/29/2009	1	PETERJUN09	002935	3827498456	183.85
DOMIN3 / Dominion Virginia Power	35879	5/29/2009	1	ROLLMAY09	002935	2624300006	25.22

Albemarle County Service Authority
 Complete Check Register
 Current File, 05/16/09 to 05/29/09
 All Accounts, Sessions 000000 to 002938

Date: Payment / Vendor Information	Check	Ck Date	Prity	Invoice	Session	Reference	Amount
DOMIN3 / Dominion Virginia Power	35879	5/29/2009	1	ROOKWMAY09	002935	5666293393	5.81
DOMIN3 / Dominion Virginia Power	35879	5/29/2009	1	RT250MAY09	002935	0771930005	135.52
DOMIN3 / Dominion Virginia Power	35879	5/29/2009	1	RT742JUN09	002935	9534967501	108.92
DOMIN3 / Dominion Virginia Power	35879	5/29/2009	1	SUMMIJUN09	002935	4823452430	36.01
DOMIN3 / Dominion Virginia Power	35879	5/29/2009	1	WINTEMAY09	002935	0945818763	28.40
DOMIN3 / Dominion Virginia Power	35879	5/29/2009	1	WOODMAY09	002935	0093014934	137.74
DOMIN3 Subtotal :							3577.51
DUFFEL / Duffelbags.com	35880	5/29/2009	1	21352	002935	PO#7828	540.00
DUFFEL Subtotal :							540.00
ECKSUP / Eck Supply	35881	5/29/2009	1	08165951	002935		32.17
ECKSUP Subtotal :							32.17
ENGIN1 / Engineers Plus, PC	35882	5/29/2009	1	3762	002935		534.64
ENGIN1 Subtotal :							534.64
ENVELO / Envelopes Only, Inc.	35883	5/29/2009	1	0107555	002935	PO#7810	116.03
ENVELO / Envelopes Only, Inc.	35883	5/29/2009	1	0107556	002935	PO#7810	1695.75
ENVELO / Envelopes Only, Inc.	35883	5/29/2009	1	0107558	002935	PO#7810	338.46
ENVELO / Envelopes Only, Inc.	35883	5/29/2009	1	107557	002935	PO#7810	1966.80
ENVELO Subtotal :							4117.04
EORIO / Lisa Eorio	35884	5/29/2009	1	PAYT051309	002935	RAIN BARRE	60.00
EORIO Subtotal :							60.00
FERGUS / Ferguson Enterprises, Inc.	35885	5/29/2009	1	1616188	002935		996.20
FERGUS / Ferguson Enterprises, Inc.	35885	5/29/2009	1	1616188-1	002935		302.06
FERGUS / Ferguson Enterprises, Inc.	35885	5/29/2009	1	1616486	002935		23.84
FERGUS / Ferguson Enterprises, Inc.	35885	5/29/2009	1	1617015	002935		536.82
FERGUS / Ferguson Enterprises, Inc.	35885	5/29/2009	1	1618011	002935		147.20

Albemarle County Service Authority
 Complete Check Register
 Current File, 05/16/09 to 05/29/09
 All Accounts, Sessions 000000 to 002938

Date: Payment / Vendor Information	Check	Ck Date	Prity	Invoice	Session	Reference	Amount
FERGUS / Ferguson Enterprises, Inc.	35885	5/29/2009	1	1618041	002935		31.56
FERGUS / Ferguson Enterprises, Inc.	35885	5/29/2009	1	1618277	002935		26.41
FERGUS / Ferguson Enterprises, Inc.	35885	5/29/2009	1	1618785	002935		48.38
FERGUS Subtotal :							2112.47
FSR / First Systems and Resources	35886	5/29/2009	1	79649	002935		428.72
FSR Subtotal :							428.72
GARRYS / Garry's Greenbrier Service LLC	35887	5/29/2009	1	APRIL09	002935	ON ACCOUNT	207.65
GARRYS Subtotal :							207.65
GORHAM / Peter C. Gorham	35888	5/29/2009	1	PAY021909	002935	TRAVEL ADV	235.00
GORHAM Subtotal :							235.00
HDSUPP / HD Supply Waterworks, Ltd.	35889	5/29/2009	1	8867255	002935		50.01
HDSUPP / HD Supply Waterworks, Ltd.	35889	5/29/2009	1	8901152	002935		115.00
HDSUPP Subtotal :							165.01
HELMR / Anthony Helm	35890	5/29/2009	1	PAYT051309	002935	RAIN BARRE	30.00
HELMR Subtotal :							30.00
HENLEY / Thomas W. Henley, Jr.	35891	5/29/2009	1	EXPREP0509	002935	TRAVEL EXP	78.11
HENLEY Subtotal :							78.11
HILTO1 / Hilton San Diego Bayfront	35892	5/29/2009	1	1PAYT22009	002935	323SXQR0	1462.50
HILTO1 / Hilton San Diego Bayfront	35892	5/29/2009	1	2PAYT21909	002935	323SX42PO	1462.50
HILTO1 / Hilton San Diego Bayfront	35892	5/29/2009	1	3PAYT22009	002935	L. BREEDEN	1462.50
HILTO1 / Hilton San Diego Bayfront	35892	5/29/2009	1	4PAYT21909	002935	323SWZX30	1462.50
HILTO1 Subtotal :							5850.00
HRDIVE / HR Diversified Solutions, LLC	35893	5/29/2009	1	2009000312	002935	PO#7736	3100.00

Albemarle County Service Authority
 Complete Check Register
 Current File, 05/16/09 to 05/29/09
 All Accounts, Sessions 000000 to 002938

Date: Payment / Vendor Information	Check	Ck Date	Prity	Invoice	Session	Reference	Amount
HRDIVE Subtotal :							3100.00
HYDRAF / Hydraflo, Inc.	35894	5/29/2009	1	11025	002935	PO#7818	1194.00
HYDRAF Subtotal :							1194.00
INFOLI / Kroll, Inc.	35895	5/29/2009	1	468731	002935		135.20
INFOLI / Kroll, Inc.	35895	5/29/2009	1	482592	002935		67.60
INFOLI Subtotal :							202.80
JAMES / James River Solutions	35896	5/29/2009	1	300538	002935		472.69
JAMES / James River Solutions	35896	5/29/2009	1	300544	002935		990.59
JAMES / James River Solutions	35896	5/29/2009	1	300938	002935		714.92
JAMES / James River Solutions	35896	5/29/2009	1	300943	002935		1056.40
JAMES Subtotal :							3234.60
KENDAL / Kendall & Son, Ltd.	35897	5/29/2009	1	43320	002935		593.00
KENDAL Subtotal :							593.00
LI / Shusen Li	35898	5/29/2009	1	PAYT051409	002935	TOILET REB	300.00
LI Subtotal :							300.00
LYNNJE / Jeremy Lynn	35899	5/29/2009	1	PAYT031709	002935	TRAVEL ADV	680.28
LYNNJE Subtotal :							680.28
LYNNMI / Michael R. Lynn	35900	5/29/2009	1	PAYT022009	002935	TRAVEL ADV	285.00
LYNNMI Subtotal :							285.00
MAILIN / Mailing Services of Virginia	35901	5/29/2009	1	0905086	002935		313.20
MAILIN Subtotal :							313.20
MCCOYB / Brad & Dawn McCoy	35902	5/29/2009	1	PAYT052009	002935	RAIN BARRE	30.00
MCCOYB Subtotal :							30.00
MILLER / Miller's Office Products	35903	5/29/2009	1	148325	002935		55.13
MILLER Subtotal :							55.13

Albemarle County Service Authority
 Complete Check Register
 Current File, 05/16/09 to 05/29/09
 All Accounts, Sessions 000000 to 002938

Date: Payment / Vendor Information	Check	Ck Date	Prity	Invoice	Session	Reference	Amount
MINNES / Minnesota Life Insurance Company	35904	5/29/2009	1	LIFE053109	002935	LIFE INS.	195.73
MINNES Subtotal :							195.73
Employee	35905	5/29/2009	1	CAFE052709	002935	MED. REIMB	6.29
Employee	35905	5/29/2009	1	PAYT051309	002935	TUITION	1263.90
Subtotal :							1270.19
OFFICE / Office Depot Credit Plan	35906	5/29/2009	1	APRIL09	002935	ON ACCOUNT	249.96
OFFICE Subtotal :							249.96
OLDMIL / Old Mill, Inc.	35907	5/29/2009	1	9440	002935	PO#7811	2366.10
OLDMIL / Old Mill, Inc.	35907	5/29/2009	1	9441	002935	PO#7811	316.26
OLDMIL Subtotal :							2682.36
PERFO1 / Performance Signs & Graphics	35908	5/29/2009	1	12812	002935		180.00
PERFO1 Subtotal :							180.00
PHANSO / Patricia Hanson	35909	5/29/2009	1	PAYT051309	002935	RAIN BARRE	30.00
PHANSO Subtotal :							30.00
PITNEY / Pitney Bowes Inc.	35910	5/29/2009	1	884909	002935		121.75
PITNEY Subtotal :							121.75
RAPPAH / Rappahannock Electric Cooperative	35911	5/29/2009	1	BRIAR0409	002935	7397720000	26.80
RAPPAH / Rappahannock Electric Cooperative	35911	5/29/2009	1	NRIVAN0409	002935	6397720000	103.15
RAPPAH Subtotal :							129.95
RICHMO / Richmond Times-Dispatch	35912	5/29/2009	1	APRIL09	002935	A-3113758	431.60
RICHMO Subtotal :							431.60
RIVAN1 / Rivanna Solid Waste Authority	35913	5/29/2009	1	APRIL09	002935	ACCT. 70	369.36
RIVAN1 Subtotal :							369.36
SAFEWA / Safeware, Inc.	35914	5/29/2009	1	3130545	002935		742.30
SAFEWA / Safeware, Inc.	35914	5/29/2009	1	3131526	002935		282.39

Albemarle County Service Authority
 Complete Check Register
 Current File, 05/16/09 to 05/29/09
 All Accounts, Sessions 000000 to 002938

Date: Payment / Vendor Information	Check	Ck Date	Prity	Invoice	Session	Reference	Amount
SAFEWA Subtotal :							1024.69
SOUTH3 / Southern States	35915	5/29/2009	1	MAY09	002935	027170/32	89.12
SOUTH3 Subtotal :							89.12
SPECIA / Specialty Fasteners of Ch'ville	35916	5/29/2009	1	139965	002935		55.49
SPECIA / Specialty Fasteners of Ch'ville	35916	5/29/2009	1	140007	002935		28.50
SPECIA / Specialty Fasteners of Ch'ville	35916	5/29/2009	1	140183	002935		34.88
SPECIA Subtotal :							118.87
SPRINT / Embarq	35917	5/29/2009	1	CHILL0509	002935	4340100113	78.00
SPRINT / Embarq	35917	5/29/2009	1	DSL0509	002935	4349773586	633.82
SPRINT / Embarq	35917	5/29/2009	1	EDNAM0509	002935	4340100312	117.00
SPRINT / Embarq	35917	5/29/2009	1	MAIN0509	002935	4349774511	857.13
SPRINT / Embarq	35917	5/29/2009	1	MOSB0609	002935	4342959260	41.38
SPRINT / Embarq	35917	5/29/2009	1	SAND0609	002935	4349791184	37.82
SPRINT Subtotal :							1765.15
STONG / Therese Stong	35918	5/29/2009	1	PAYT051809	002935	RAIN BARRE	60.00
STONG Subtotal :							60.00
SUPPLY / The Supply Room Companies, Inc.	35919	5/29/2009	1	1236835	002935		196.03
SUPPLY / The Supply Room Companies, Inc.	35919	5/29/2009	1	1245693	002935		161.60
SUPPLY Subtotal :							357.63
SUTTO1 / Sutton-Clark Supply, Inc.	35920	5/29/2009	1	356849	002935		781.58
SUTTO1 Subtotal :							781.58
THRAVE / Katrina Thraves	35921	5/29/2009	1	PAYT021909	002935	TRAVEL ADV	235.00
THRAVE Subtotal :							235.00
TIGERD / TigerDirect, Inc.	35922	5/29/2009	1	0777962011	002935	PO#7817	886.00
TIGERD / TigerDirect, Inc.	35922	5/29/2009	1	0777962012	002935	PO#7817	1899.99
TIGERD / TigerDirect, Inc.	35922	5/29/2009	1	0777962013	002935	PO#7817	289.99
TIGERD / TigerDirect, Inc.	35922	5/29/2009	1	0777962015	002935	PO#7817	1967.98
TIGERD Subtotal :							5043.96

Albemarle County Service Authority
 Complete Check Register
 Current File, 05/16/09 to 05/29/09
 All Accounts, Sessions 000000 to 002938

Date: Payment / Vendor Information	Check	Ck Date	Prity	Invoice	Session	Reference	Amount
TREAS2 / Treasurer of Virginia	35923	5/29/2009	1	PAYT052109	002935	J LYNN	80.00
TREAS2 Subtotal :							80.00
TREAS3 / Treasurer of Virginia - VRS	35924	5/29/2009	1	LIFE0509	002935	LIFE INS.	1982.92
TREAS3 / Treasurer of Virginia - VRS	35924	5/29/2009	1	RETIRE0509	002935	RETIREMENT	32331.34
TREAS3 Subtotal :							34314.26
TTRUCK / Truck Parts East	35925	5/29/2009	1	114300	002935		211.26
TTRUCK / Truck Parts East	35925	5/29/2009	1	114491	002935		52.46
TTRUCK Subtotal :							263.72
UNIFIR / UniFirst Corporation	35926	5/29/2009	1	2020562931	002935		657.30
UNIFIR / UniFirst Corporation	35926	5/29/2009	1	2020563714	002935		418.48
UNIFIR Subtotal :							1075.78
USABLU / USABlueBook	35927	5/29/2009	1	813508	002935		265.00
USABLU Subtotal :							265.00
VAPILO / The Virginian-Pilot	35928	5/29/2009	1	2195155	002935	A-39203181	501.70
VAPILO Subtotal :							501.70
VAUTIL / Virginia Utility Protection Servi	35929	5/29/2009	1	04090003	002935	A-ACSA26	868.00
VAUTIL Subtotal :							868.00
WAYSID / Wayside Takeout & Catering	35930	5/29/2009	1	5152009-06	002935		740.34
WAYSID Subtotal :							740.34
WEBROW / W. E. Brown, Inc.	35931	5/29/2009	1	FINAL	002935	SPO#7762	2814.50
WEBROW Subtotal :							2814.50
WHALE1 / Robert Whaley, Sr.	35932	5/29/2009	1	PAYT051809	002935	RAIN BARRE	30.00
WHALE1 Subtotal :							30.00
WHALE2 / Robert Whaley, Jr.	35933	5/29/2009	1	PAYT051809	002935	RAIN BARRE	30.00

Albemarle County Service Authority
Complete Check Register
Current File, 05/16/09 to 05/29/09
All Accounts, Sessions 000000 to 002938

Date: Payment / Vendor Information	Check	Ck Date	Prity	Invoice	Session	Reference	Amount
					WHALE2 Subtotal :		<u>30.00</u>
WORLDV / WorldView Solutions, Inc.	35934	5/29/2009	1	10595	002935	SPO#7780	15480.00
					WORLDV Subtotal :		<u>15480.00</u>
				Total For Check Account:	201-200-084		<u>162676.65</u>
						Check Register Total :	<u><u>167818.32</u></u>